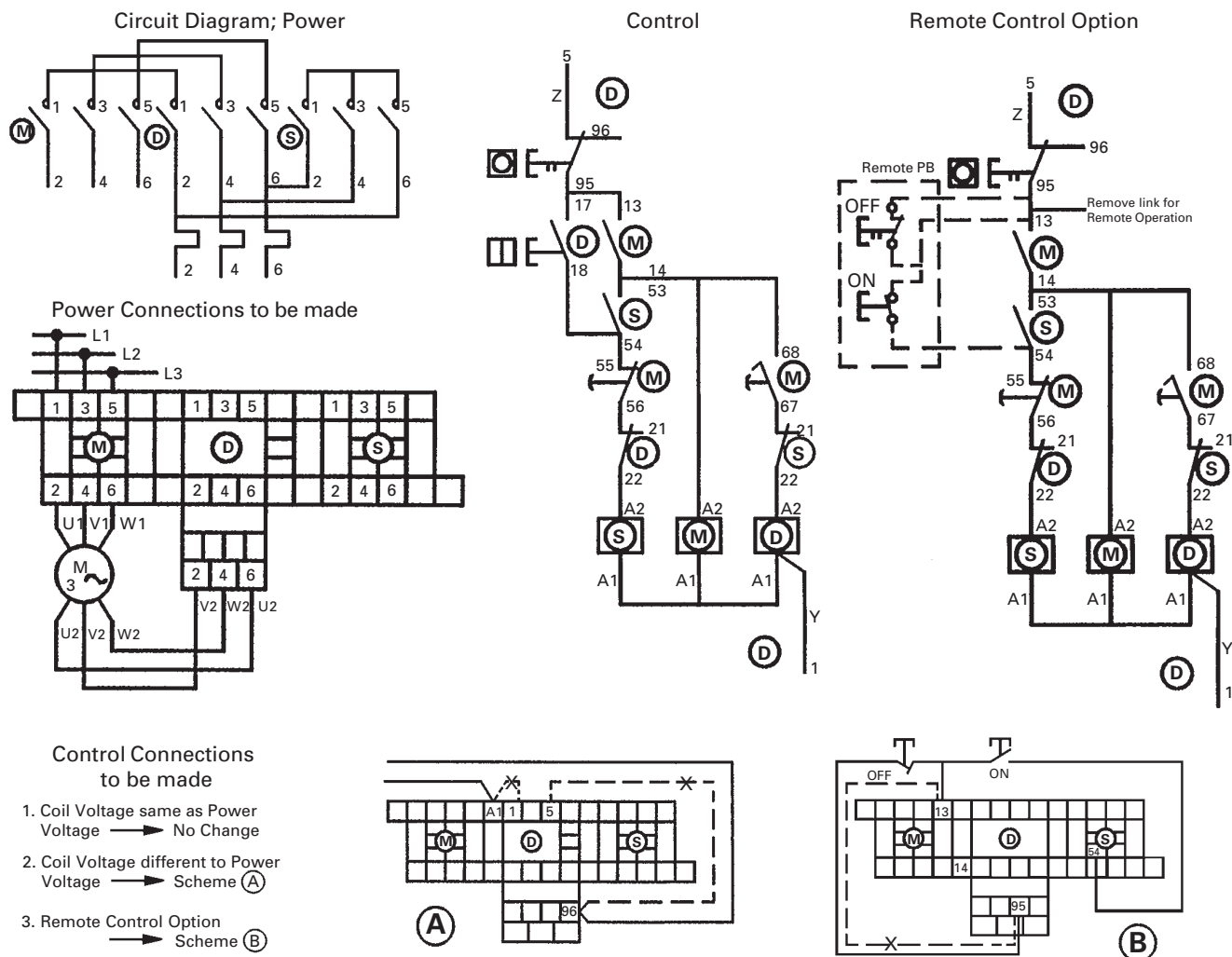


**25kW Star Delta starter without switch disconnect, IP 54 metalclad surface mounting enclosure, wiring diagram**



**Short circuit protection**

Overload Relay list number	Motor FLC Ie (A)	SCPD Back-up protection MAX HRC fuse BS88:1 aM (A)	Back-up protection (A) Max MCB Type C
<b>Direct on line</b>			
8TT87	0.63–1	4	MCH306
8TT88	1–1.6	6	MCH306
8TT89	1.6–2.5	10	MCH306
8TT90	2.5–4	16	MCH310
8TT91	4–6	16	MCH310
8TT98	5.5–8.0	20	MCH316
8TT92	7–10	25	MCH320
8TT93	10–13	32	MCH320
8TT94	13–18	40	MCH332
8TT104	18–25	50	MCH340
8TT96	23–32	63	MCH363
<b>Star Delta</b>			
8TT90SD	4.3–6.9	16	MCH310
8TT91SD	6.9–10.4	16	MCH310
8TT98SD	9.5–13.8	20	MCH316
8TT92SD	12.1–17.3	25	MCH320
8TT93SD	17.3–22.5	32	MCH320
8TT94SD	22.5–31	40	MCH332
8TT104SD	31–43	50	MCH340
8TT96SD	40–55	63	MCH363