



# SILENT DUAL

Instruction leaflet





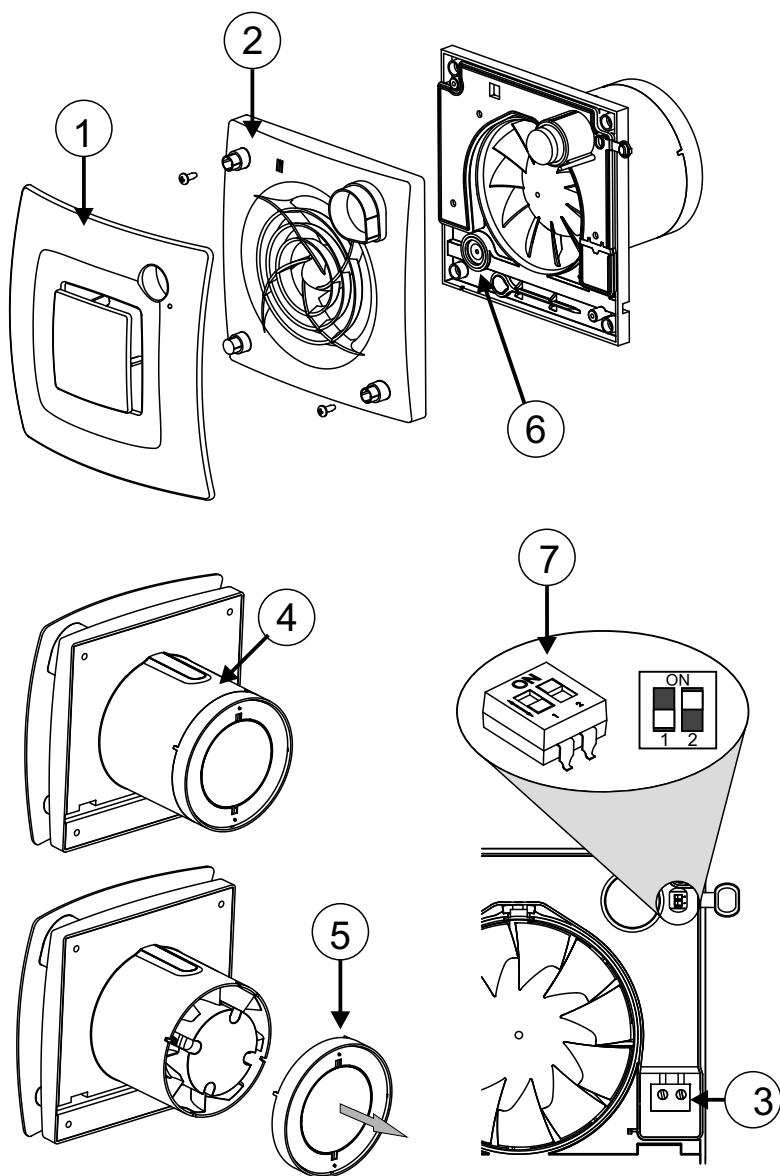
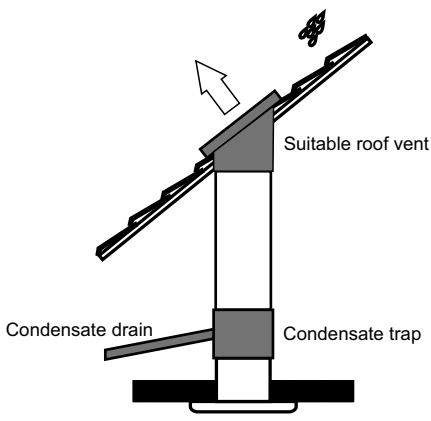
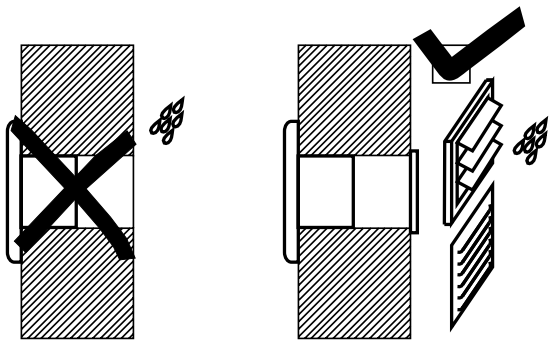
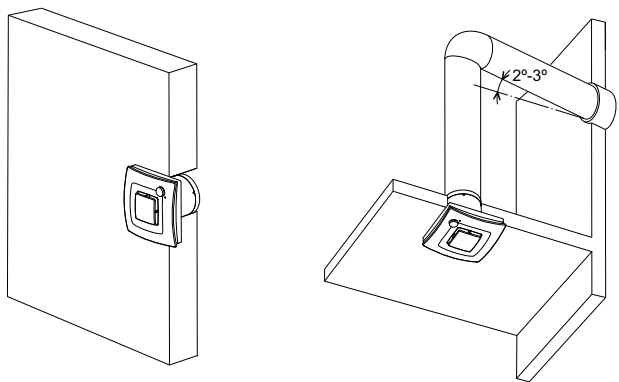


Fig. 1



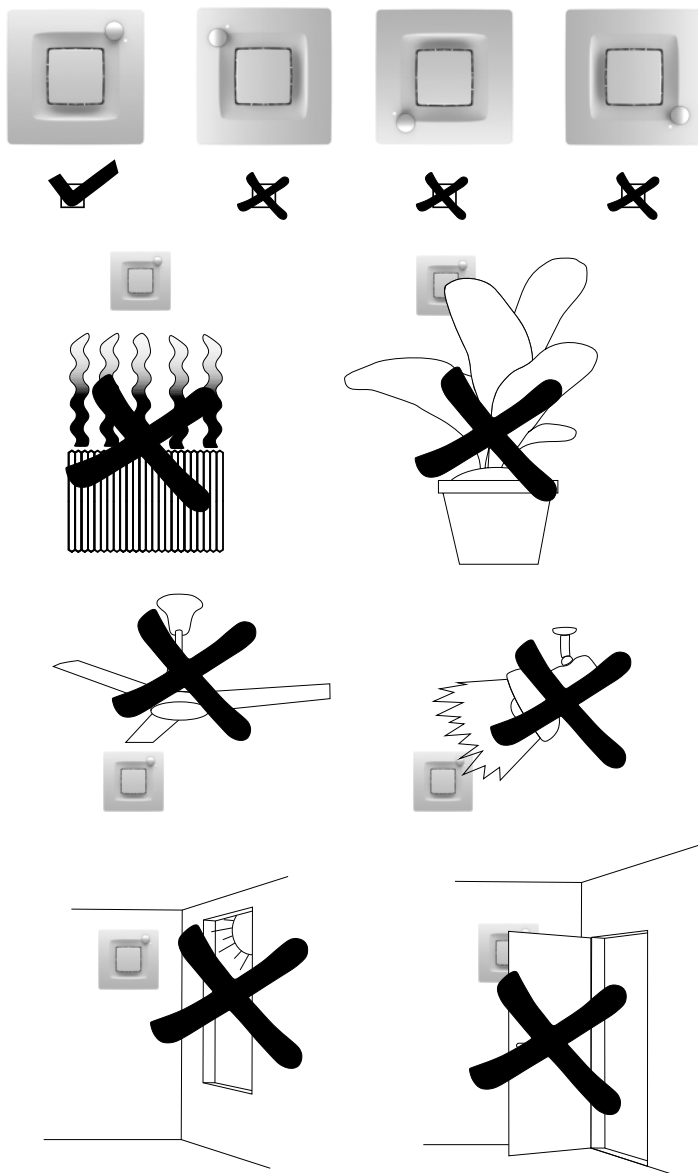


Fig. 3

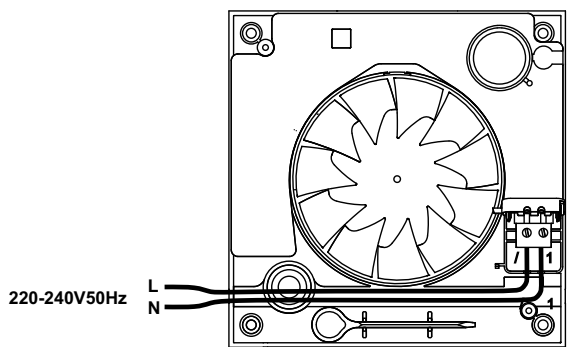
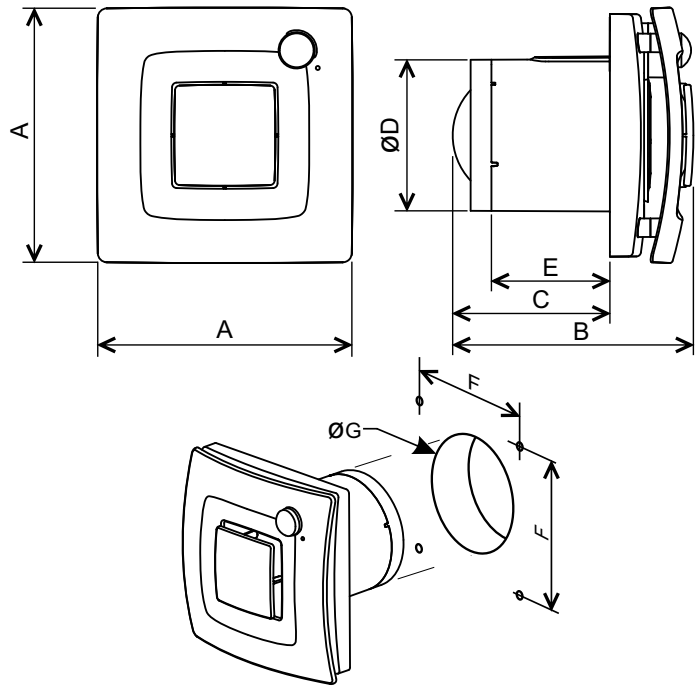


Fig. 4



Model	A	B	C	ØD	E	F	ØG
SILENT DUAL 100	167	157	103	99	77,5	134	105
SILENT DUAL 125	187	164	107,5	118	80	164,5	125
SILENT DUAL 150	232	195	132	146,5	95	196	150

## **SILENT DUAL axial extractor fans**

Please read this instruction booklet carefully before installing or starting up the product. It contains important information on personal and user safety measures to be followed whilst installing, using and carrying out maintenance work on the equipment.

The SILENT DUAL extractor fans have been manufactured following current technical safety regulations, production and quality standards as laid down by the international Quality Standard ISO 9001. All components have been checked and every one of the final products will have been individually tested at the end of the manufacturing process.

Check that the product is in perfect condition while unpacking. Make sure that the product corresponds to the one you have ordered and that the details on the instruction plate fulfil your requirements.

The installation must be carried out in accordance with the electrical standards and relevant Building Regulations in force in your country. Once the product has been installed, pass this booklet to the end user.

## **Recommendations**

**IMPORTANT:** Before installing and wiring the unit, ensure that the mains supply is disconnected.

Working ambient temperature for fan equipment should not be exceeded. Typically, this falls within  $-5^{\circ}\text{C}$  to  $+40^{\circ}\text{C}$ , unless stated otherwise.

The spigot cannot be connected to a duct which is used to extract smoke from gas or any other fuel appliance.

The extractor must not be used in explosive or corrosive atmospheres.

If the SILENT DUAL fan is operating in a room where there is a boiler or any other kind of combustion device that requires airflow to work, check that the air inlets to the room are sufficient.


This appliance can be used by children aged from 8 years and above and persons with reduced physical, sensory or mental capabilities or lack of experience and knowledge if they have been given supervision or instruction concerning use of the appliance in a safe way and understand the hazards involved. Children shall not play with the appliance.

Cleaning and user maintenance shall not be made by children without supervision.

#### **Installation (fig.1):**

- 1- Front grille
- 2- Front grille support
- 3- Connection terminals
- 4- Outlet
- 5- Removable backdraught shutter
- 6- Cable entry
- 7- Setting dip switches

The SILENT DUAL is suitable for wall or ceiling mounting and can either extract directly to atmosphere or via a ducted system (fig.2).

 ***The SILENT DUAL is provided with a PIR (passive infra-red) detector. To work properly, the extractor must be installed in such a way that detection can be carried out easily, avoiding the situations indicated in fig.3.***

The unit can be mounted on the wall or ceiling using the 4 raw plugs and the screws provided. Make a hole in the wall or ceiling of diameter:

- SILENT DUAL-100: 105 to 107 mm.
- SILENT DUAL-125: 125 to 132 mm.
- SILENT DUAL-150: 160 to 158 mm.

If using the EnviroVent high rise wall kit, please refer to kit for core drill size


If the unit is to be installed in a ducted system, use the following standard diameter of duct:

- SILENT DUAL-100: 100 mm.
- SILENT DUAL-125: 125 mm.
- SILENT DUAL-150: 150 or 160 mm.

Ensure that there are no obstructions to the airflow and that the impeller turns freely.

Fix the extractor fan to the wall in such a way that it is not distorted in order to avoid noise generation or problems with the rotation of the impeller.

The SILENT DUAL is an extractor fan designed to operate either continuously at low speed or intermittently. (see section "operation")

 ***In continuous operation, the backdraught (5) shutter is not necessary and can be removed.***

If it works intermittently, keep the backdraught shutter in place and make sure it opens freely and has not been damaged in transit.

Introduce the mains cable through the cable entry (4) and fix it to the wall.


#### **Electrical connection**

The SILENT DUAL is an extractor fan designed for a single-phase supply, with voltage and frequency as indicated on the rating plate of the unit.

The units are manufactured with double electrical insulation (Class II) and therefore they do not need an earth connection.

The electrical installation must include a double pole switch with a contact clearance of at least 3 mm.

Once the cable has been connected proceed using the electrical wiring diagram fig.4.

 ***For the extractor fan to work properly, it must be permanently powered.***

#### **Operation**

The SILENT DUAL is an extractor fan equipped with a PIR (passive infra-red) detector and a humidity sensor. This sensor permanently controls the humidity level of the room where it is installed, automatically adapting the start-up threshold and the speed of the extractor according to the real environmental conditions throughout the day and peaks in humidity (showers).





**The humidity control takes priority over the PIR detector.**

**The PIR detector has priority over the permanent control of the environmental conditions.**

Depending on the initial setting, you can choose between two operation modes, either intermittent or continuous

### **Intermittent operation**



To select this operation, place the dip-switch "1" in the "ON" position.

The extractor fan will stop.

The extractor starts automatically when a slow increase in humidity is detected. It starts at a speed that is in direct proportion to the humidity level in the room until the level returns to the start-up threshold.

The extractor also starts automatically at medium speed (75% of the maximum speed) when movement is detected and will continue to operate for the length of time set by the adjustable "run-on" timer, after being triggered by the PIR.

Two set periods are available:

2 minutes and 15 minutes.

To select the set period of the "run on" timer, place the dip-switch "2":



in "OFF" position for 2 minutes



in "ON" position for 15 minutes.

If no more movement has been detected once the run-on time, set by the timer is passed and the humidity level is below the start-up threshold, the extractor stops automatically.

If the extractor detects a rise in humidity (shower), the fan is boosted to high speed and operates at this speed until the humidity level drops below the start-up threshold level.

### **Continuous operation**



To select this operation, place the dip-switch "1" in the "OFF" position.

Operation is similar to intermittent operation with the difference that the extractor does not stop but runs continuously on trickle speed (43% of the maximum speed).

### **Maintenance**

**Fan equipment should be electrically isolated and locked out before any work starts.**

The extractor fan only requires periodical cleaning using a cloth lightly impregnated with a soft detergent.

### **Recycling.**



In accordance with EEC Standards and our responsibility for future generations, we are obliged to recycle all the materials we can.

Therefore, please deposit all waste material and packaging in their corresponding recycling containers and hand in the replaced units to the nearest handler of this type of waste product.

The fan is mainly made of steel, copper and plastic. These components should be recycling in the following categories:

- Steel and iron
- Plastics
- Electronic scrap

### **After Sales Service**

We recommend you do not dismantle or remove any other parts than those mentioned, as any tampering would automatically cancel the guarantee. If you detect any fault, contact EnviroVent on 0345 27 27 810.

Thank you for choosing EnviroVent. If you experience any problems, please call our dedicated Technical Team on 0345 27 27 810





## **WARRANTY**

The SILENT DUAL range products are covered by a five year warranty, subject to the specified maintenance stated within this booklet.

If your fan has been supplied and installed by EnviroVent it is covered with a full parts and labour warranty. If you detect a fault, please contact us on 01423 810810. You will be given guidance over the phone, or an arrangement may be made for a member of our team to visit (call-out charges may apply if a fault cannot be identified).

### **Supply Only**

If your fan has been supplied by EnviroVent and installed by a third party, it is covered by a parts only warranty. If you detect a fault and the product has been installed in accordance to the fitting/wiring instructions, relevant guidance documents and by a competent and qualified person (proof may be required), please return the product to the place of purchase for a replacement.

### **Warranty Conditions & Exclusions**

Please note that a receipt will be required as proof of purchase. Fans bought from an unapproved source, including but not limited to auction websites, are not covered by the warranty.

- The system must be correctly installed and operated according to the instructions contained in the user guide supplied.
- The warranty will be rendered invalid if the system has been serviced, maintained, repaired, taken apart or tampered with by any person not authorized, which in any way contradicts the instruction guide set out by EnviroVent.
- The warranty does not cover accidental damage, misuse or abuse.
- The warranty is in addition to your statutory or legal rights.



EnviroVent Ltd  
EnviroVent House  
Hornbeam Business Park  
Harrogate  
HG2 8PA

01423 810 810  
[info@envirovent.com](mailto:info@envirovent.com)

[www.envirovent.com](http://www.envirovent.com)