



Important Safety Notice

It is the responsibility of the person installing the electrical equipment to ensure that the installation meets the requirements of the IET wiring regulations and is therefore 'fit for purpose'. Factors such as correct selection of components, cable sizing, protective devices and Earth bonding are all critical and should be checked prior to full testing and power-up. Any other regulations applicable to the equipment being installed such as the Machinery Directive and current health and safety legislation must also be adhered to. All connections (including factory made) must be checked for the correct tightness prior to commissioning of the electrical installation. All connections should be checked periodically to ensure correct tightness.

EXERCISE CARE IF USING POWER TOOLS ON THESE PRODUCTS

Drilling, cutting or grinding GRP material will create airborne dust that can cause irritation to skin, eyes and respiratory system. Ensure that protective clothing and eye wear is worn and it is highly advisable to have Local Exhaust Ventilation equipment installed in the area where the work is being carried out.

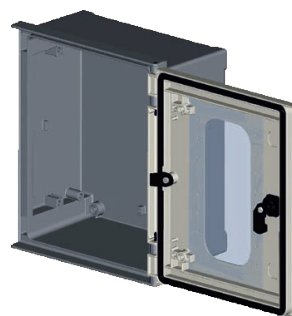
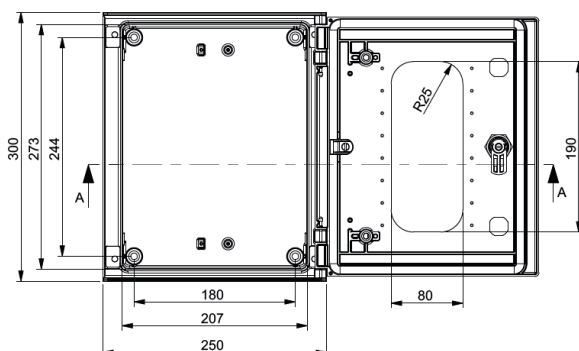
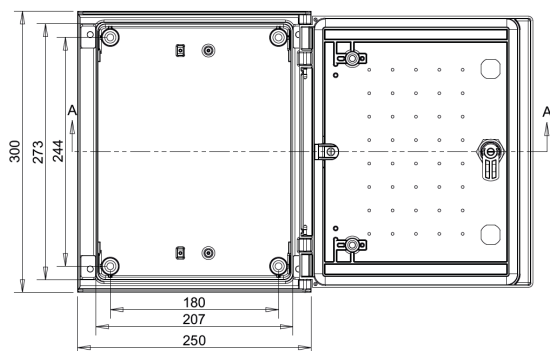
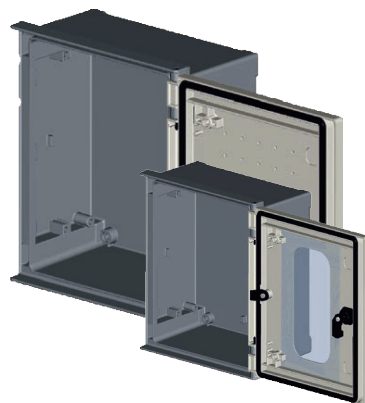
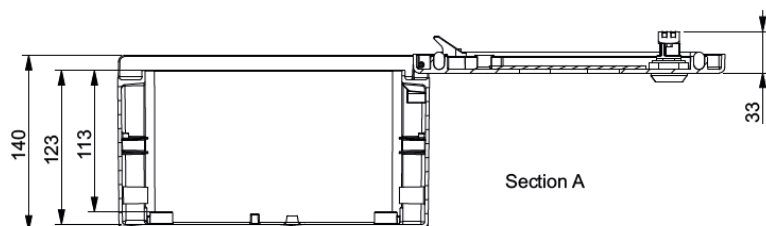


ATLAS-302514
ATLAS-302514-P

Features

- Manufactured from fibre glass reinforced polyester, moulded by hot compression.
- Colour Light Grey RAL 7035
- Self-extinguishable: 960°C test withstand. Halogen free. Double insulation. No electrical contact risks.
- Degree of protection IP66 UNE 20324 (EN 60529).
- Certification of compliance with IEC62208 enclosure standard. Suitable for indoor or outdoor use.
- Large door opening (180°). Reversibility for installation right or left door opening.
- Anti-intruder hinges system.
- 1 lock on ATLAS-302514 & 302514-P as standard. Other lock options available - please ask for details.
- Galvanised steel mounting plate.
- Resistant to harsh atmospheres.
- Light weight gives an easy installation.
- 10+ years. Long life lasting without maintenance under standard environmental conditions.

Code	Description	H x W x D (mm)	Weight
ATLAS-302514	Standard enclosure colour light grey RAL 7035 supplied with Glavanised steel back plate & direct wall mounting fixings	300 x 250 x 140	2.72kg
ATLAS-302514-P	Clear glazed door enclosure colour light grey RAL 7035 supplied with Glavanised steel back plate & direct wall mounting fixings	300 x 250 x 140	2.72kg



Enviromental Performance

Minimum temperature	-30° C	IP dust water protection degree IEC-60529	66
Maximum temperature	70° C	IK impact protection degree IEC-62208	10
Compression resistance	100kg		

Electrical Performance

Nominal tension direct current up to:	1500 VdC
Nominal tension alternating current up to:	1000 Vac
Maximum power dissipation $\Delta T=40^{\circ}C$ (wall surface)	36.2 W

Installation and assembly system

Inside Installation	Yes	Wall Surface	Yes
Outdoor Installation	Yes	Floor Mounting	Yes
Flush Mounting	No	Pole Mounting	Yes

Accessories Available -
See page 17

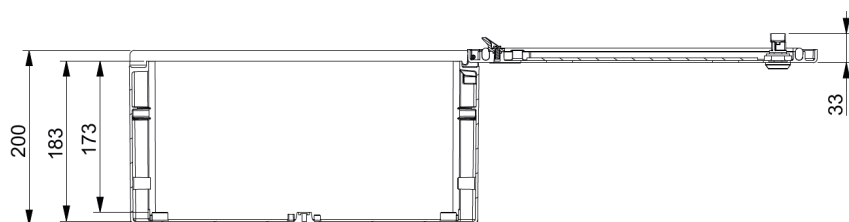


ATLAS-404020
ATLAS-404020-P

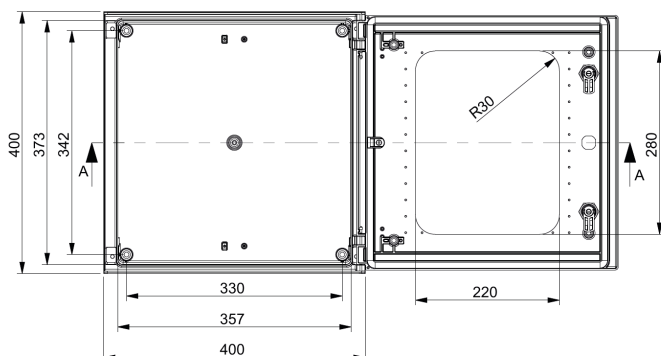
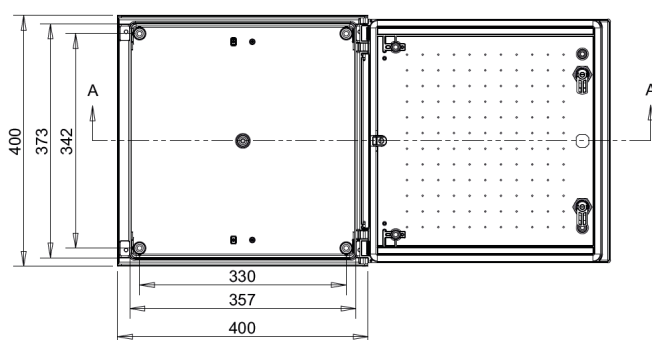
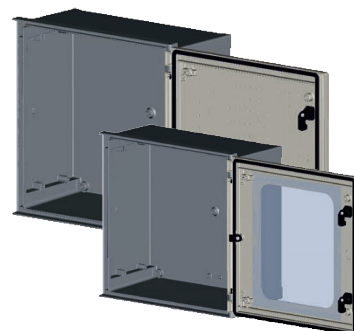
Features

- Manufactured from fibre glass reinforced polyester, moulded by hot compression.
- Colour Light Grey RAL 7035
- Self-extinguishable: 960°C test withstand. Halogen free. Double insulation. No electrical contact risks.
- Degree of protection IP66 UNE 20324 (EN 60529).
- Certification of compliance with IEC62208 enclosure standard. Suitable for indoor or outdoor use.
- Large door opening (180°). Reversibility for installation right or left door opening.
- Anti-intruder hinges system.
- 2 lock with double-bar insert as standard. Other lock options available - please ask for details.
- Galvanised steel mounting plate.
- Resistant to harsh atmospheres.
- Light weight gives an easy installation.
- 10+ years. Long life lasting without maintenance under standard environmental conditions.

Code	Description	H x W x D (mm)	Weight
ATLAS-404020	Standard enclosure colour light grey RAL 7035 supplied with Glavanised steel back plate & direct wall mounting fixings	400 x 400 x 200	6.25kg
ATLAS-404020-P	Clear glazed door enclosure colour light grey RAL 7035 supplied with Glavanised steel back plate & direct wall mounting fixings	400 x 400 x 200	6.25kg



Section A



Environmental Performance

Minimum temperature	-30° C	IP dust water protection degree IEC-60529	66
Maximum temperature	70° C	IK impact protection degree IEC-62208	10
Compression resistance	100kg		

Electrical Performance

Nominal tension direct current up to:	1500 VdC
Nominal tension alternating current up to:	1000 Vac
Maximum power dissipation $\Delta T=40^{\circ}C$ (wall surface)	72.6 W

Installation and assembly system

Inside Installation	Yes	Wall Surface	Yes
Outdoor Installation	Yes	Floor Mounting	Yes
Flush Mounting	No	Pole Mounting	Yes

Accessories Available -
See page 17

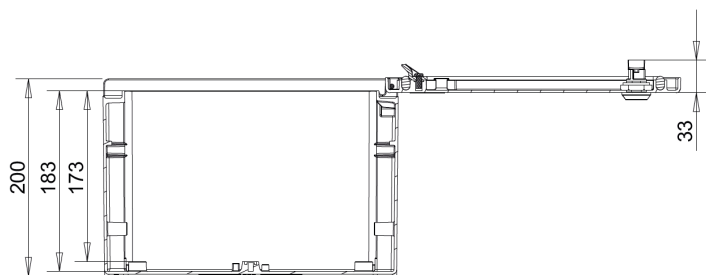


ATLAS-403020
ATLAS-403020-P

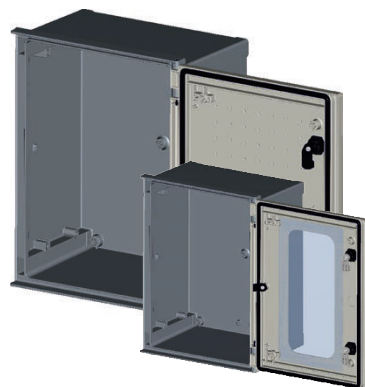
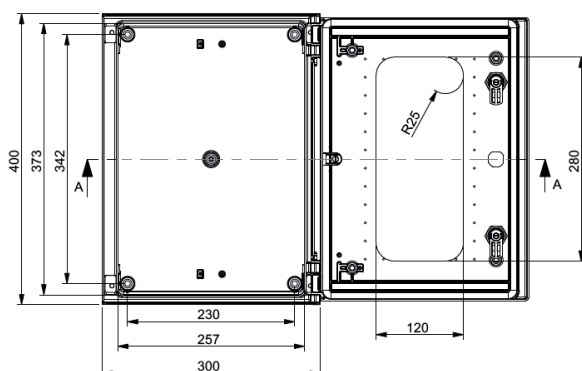
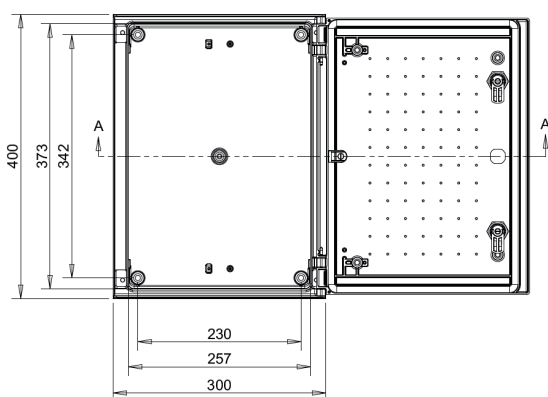
Features

- Manufactured from fibre glass reinforced polyester, moulded by hot compression.
- Colour Light Grey RAL 7035
- Self-extinguishable: 960°C test withstand. Halogen free. Double insulation. No electrical contact risks.
- Degree of protection IP66 UNE 20324 (EN 60529).
- Certification of compliance with IEC62208 enclosure standard. Suitable for indoor or outdoor use.
- Large door opening (180°). Reversibility for installation right or left door opening.
- Anti-intruder hinges system.
- 2 lock with double-bar insert as standard. Other lock options available - please ask for details.
- Galvanised steel mounting plate.
- Resistant to harsh atmospheres.
- Light weight gives an easy installation.
- 10+ years. Long life lasting without maintenance under standard environmental conditions.

Code	Description	H x W x D (mm)	Weight
ATLAS-403020	Standard enclosure colour light grey RAL 7035 supplied with Galvanised steel back plate & direct wall mounting fixings	400 x 300 x 200	4.9kg
ATLAS-403020-P	Clear glazed door enclosure colour light grey RAL 7035 supplied with Galvanised steel back plate & direct wall mounting fixings	400 x 300 x 200	4.9kg



Section A



Enviromental Performance

Minimum temperature	-30° C	IP dust water protection degree IEC-60529	66
Maximum temperature	70° C	IK impact protection degree IEC-62208	10
Compression resistance	100kg		

Electrical Performance

Nominal tension direct current up to:	1500 VdC
Nominal tension alternating current up to:	1000 Vac
Maximum power dissipation $\Delta T=40^{\circ}C$ (wall surface)	58.8 W

Installation and assembly system

Inside Installation	Yes	Wall Surface	Yes
Outdoor Installation	Yes	Floor Mounting	Yes
Flush Mounting	No	Pole Mounting	Yes

Accessories Available -
See page 17

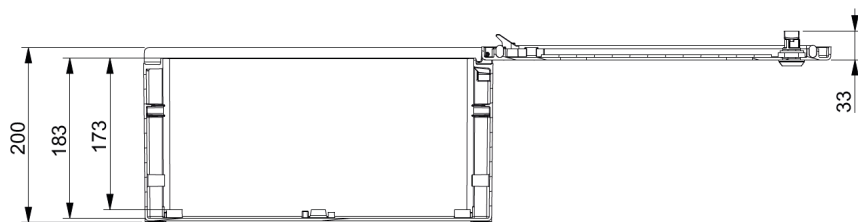


ATLAS-504020
ATLAS-504020-P

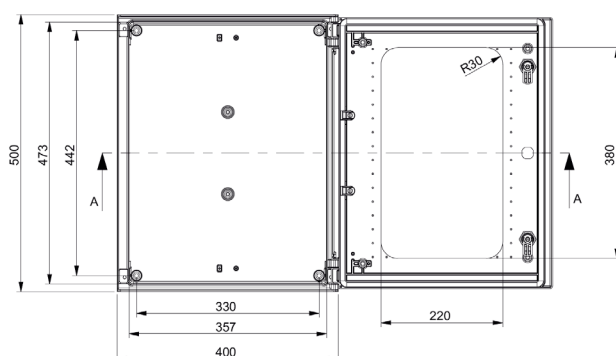
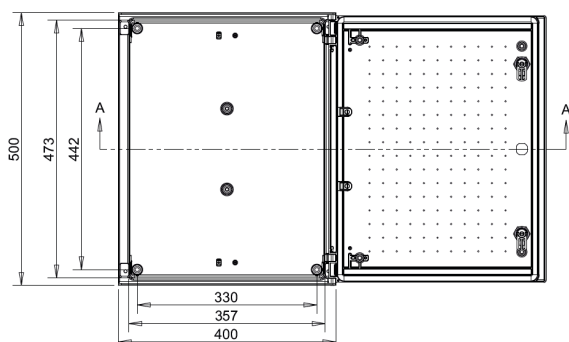
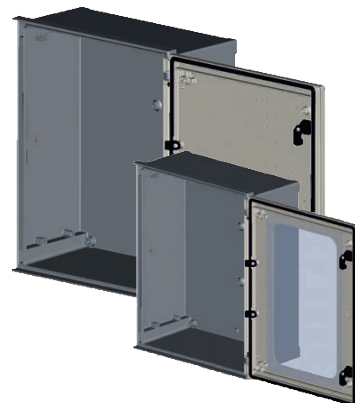
Features

- Manufactured from fibre glass reinforced polyester, moulded by hot compression.
- Colour Light Grey RAL 7035
- Self-extinguishable: 960°C test withstand. Halogen free. Double insulation. No electrical contact risks.
- Degree of protection IP66 UNE 20324 (EN 60529).
- Certification of compliance with IEC62208 enclosure standard. Suitable for indoor or outdoor use.
- Large door opening (180°). Reversibility for installation right or left door opening.
- Anti-intruder hinges system.
- 2 lock with double-bar insert as standard. Other lock options available - please ask for details.
- Galvanised steel mounting plate.
- Resistant to harsh atmospheres.
- Light weight gives an easy installation.
- 10+ years. Long life lasting without maintenance under standard environmental conditions.

Code	Description	H x W x D (mm)	Weight
ATLAS-504020	Standard enclosure colour light grey RAL 7035 supplied with Galvanised steel back plate & direct wall mounting fixings	500 x 400 x 200	7.45kg
ATLAS-504020-P	Clear glazed door enclosure colour light grey RAL 7035 supplied with Galvanised steel back plate & direct wall mounting fixings	500 x 400 x 200	7.45kg



Section A



Environmental Performance

Minimum temperature	-30° C	IP dust water protection degree IEC-60529	66
Maximum temperature	70° C	IK impact protection degree IEC-62208	10
Compression resistance	100kg		

Electrical Performance

Nominal tension direct current up to:	1500 VdC
Nominal tension alternating current up to:	1000 Vac
Maximum power dissipation $\Delta T=40^{\circ}C$ (wall surface)	82.9 W

Installation and assembly system

Inside Installation	Yes	Wall Surface	Yes
Outdoor Installation	Yes	Floor Mounting	Yes
Flush Mounting	No	Pole Mounting	Yes

Accessories Available -

See page 17

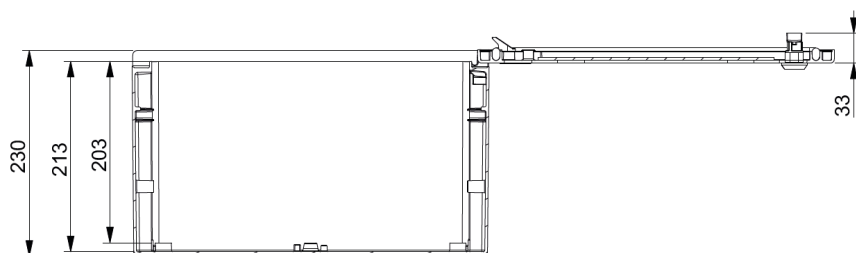


ATLAS-604023
ATLAS-604023-P

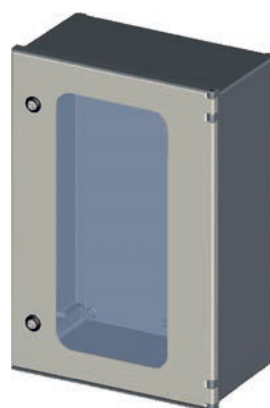
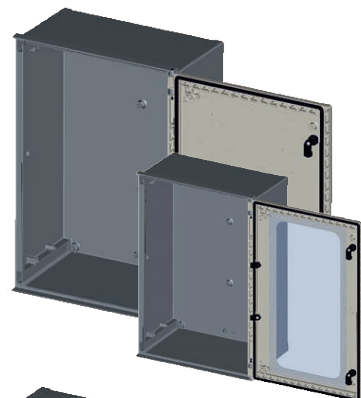
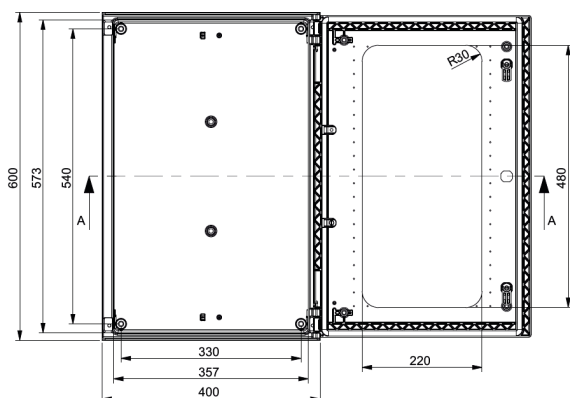
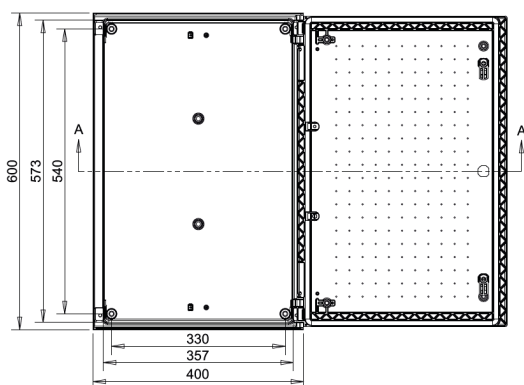
Features

- Manufactured from fibre glass reinforced polyester, moulded by hot compression.
- Colour Light Grey RAL 7035
- Self-extinguishable: 960°C test withstand. Halogen free. Double insulation. No electrical contact risks.
- Degree of protection IP66 UNE 20324 (EN 60529).
- Certification of compliance with IEC62208 enclosure standard. Suitable for indoor or outdoor use.
- Large door opening (180°). Reversibility for installation right or left door opening.
- Anti-intruder hinges system.
- 2 lock with double-bar insert as standard. Other lock options available - please ask for details.
- Galvanised steel mounting plate.
- Resistant to harsh atmospheres.
- Light weight gives an easy installation.
- 10+ years. Long life lasting without maintenance under standard environmental conditions.

Code	Description	H x W x D (mm)	Weight
ATLAS-604023	Standard enclosure colour light grey RAL 7035 supplied with Galvanised steel back plate & direct wall mounting fixings	600 x 400 x 230	10.13kg
ATLAS-604023-P	Clear glazed door enclosure colour light grey RAL 7035 supplied with Galvanised steel back plate & direct wall mounting fixings	600 x 400 x 230	10.13kg



Section A



Environmental Performance

Minimum temperature	-30° C	IP dust water protection degree IEC-60529	66
Maximum temperature	70° C	IK impact protection degree IEC-62208	10
Compression resistance	100kg		

Electrical Performance

Nominal tension direct current up to:	1500 VdC
Nominal tension alternating current up to:	1000 Vac
Maximum power dissipation $\Delta T=40^{\circ}C$ (wall surface)	99.4 W

Installation and assembly system

Inside Installation	Yes	Wall Surface	Yes
Outdoor Installation	Yes	Floor Mounting	Yes
Flush Mounting	No	Pole Mounting	Yes

Accessories Available -

See page 17

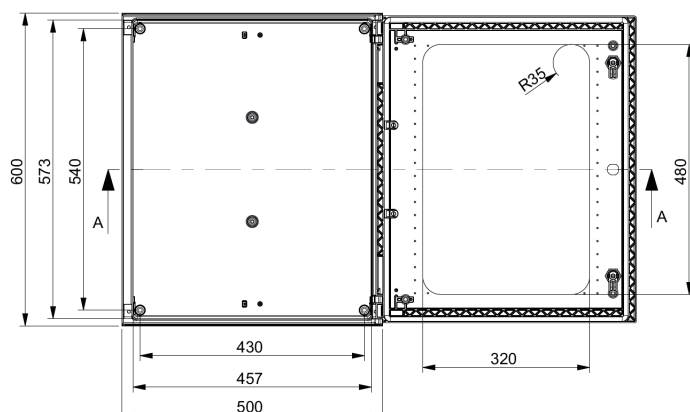
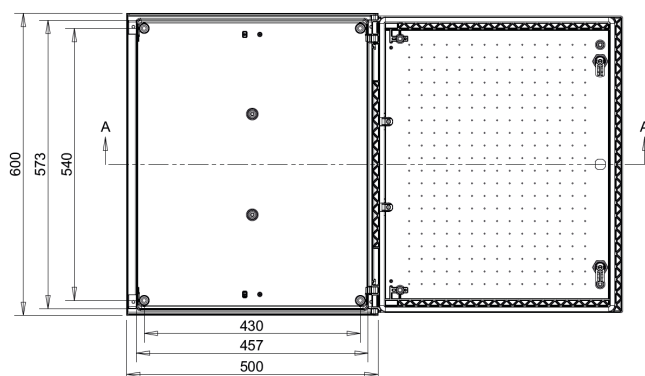
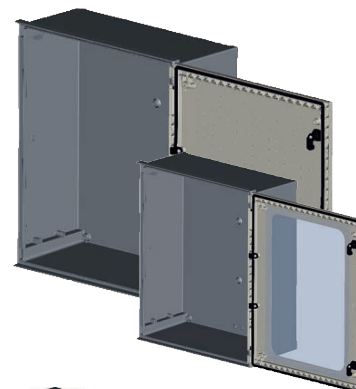
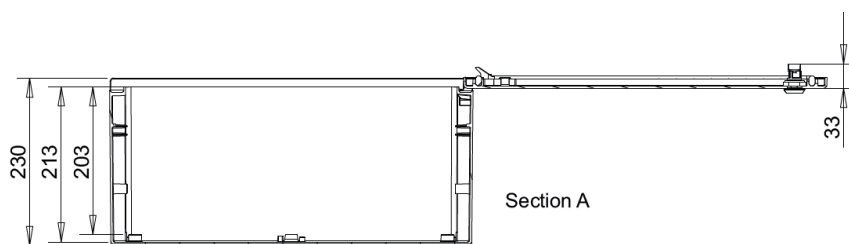


ATLAS-605023
ATLAS-605023-P

Features

- Manufactured from fibre glass reinforced polyester, moulded by hot compression.
- Colour Light Grey RAL 7035
- Self-extinguishable: 960°C test withstand. Halogen free. Double insulation. No electrical contact risks.
- Degree of protection IP66 UNE 20324 (EN 60529).
- Certification of compliance with IEC62208 enclosure standard. Suitable for indoor or outdoor use.
- Large door opening (180°). Reversibility for installation right or left door opening.
- Anti-intruder hinges system.
- 2 lock with double-bar insert as standard. Other lock options available - please ask for details.
- Galvanised steel mounting plate.
- Resistant to harsh atmospheres.
- Light weight gives an easy installation.
- 10+ years. Long life lasting without maintenance under standard environmental conditions.

Code	Description	H x W x D (mm)	Weight
ATLAS-605023	Standard enclosure colour light grey RAL 7035 supplied with Galvanised steel back plate & direct wall mounting fixings	600 x 500 x 230	11.53kg
ATLAS-605023-P	Clear glazed door enclosure colour light grey RAL 7035 supplied with Galvanised steel back plate & direct wall mounting fixings	600 x 500 x 230	11.53kg



Environmental Performance

Minimum temperature	-30° C	IP dust water protection degree IEC-60529	66
Maximum temperature	70° C	IK impact protection degree IEC-62208	10
Compression resistance	100kg		

Electrical Performance

Nominal tension direct current up to:	1500 VdC
Nominal tension alternating current up to:	1000 Vac
Maximum power dissipation $\Delta T=40^{\circ}\text{C}$ (wall surface)	117.0 W

Installation and assembly system

Inside Installation	Yes	Wall Surface	Yes
Outdoor Installation	Yes	Floor Mounting	Yes
Flush Mounting	No	Pole Mounting	Yes

Accessories Available -
See page 17

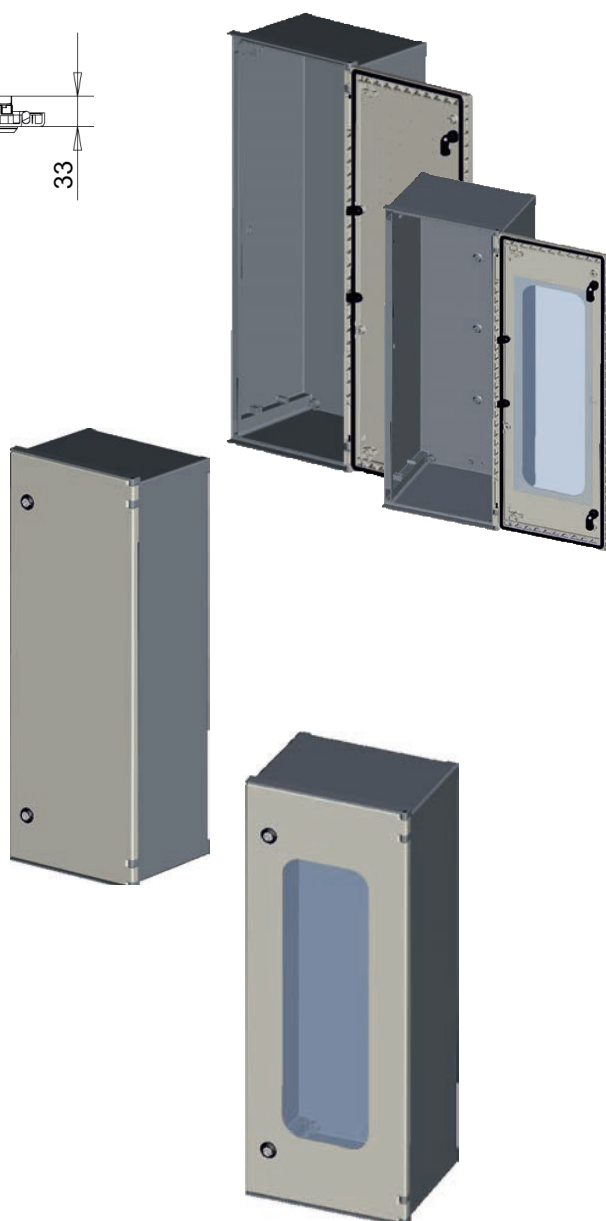
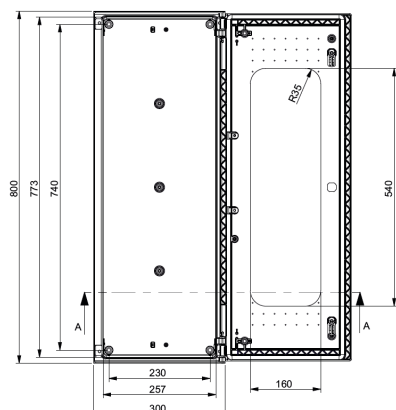
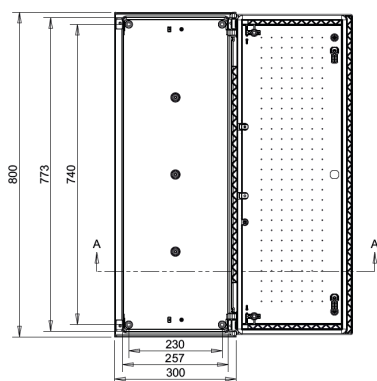
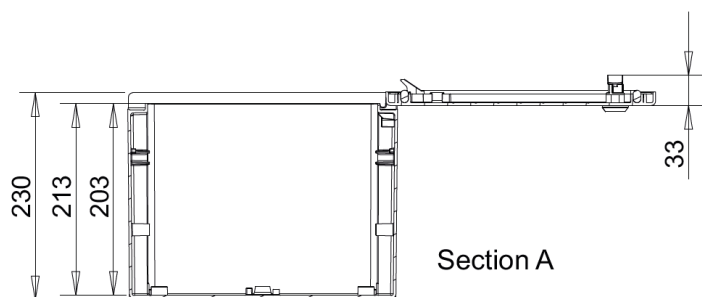


ATLAS-803023
ATLAS-803023-P

Features

- Manufactured from fibre glass reinforced polyester, moulded by hot compression.
- Colour Light Grey RAL 7035
- Self-extinguishable: 960°C test withstand. Halogen free. Double insulation. No electrical contact risks.
- Degree of protection IP66 UNE 20324 (EN 60529).
- Certification of compliance with IEC62208 enclosure standard. Suitable for indoor or outdoor use.
- Large door opening (180°). Reversibility for installation right or left door opening.
- Anti-intruder hinges system.
- 2 lock with double-bar insert as standard. Other lock options available - please ask for details.
- Galvanised steel mounting plate.
- Resistant to harsh atmospheres.
- Light weight gives an easy installation.
- 10+ years. Long life lasting without maintenance under standard environmental conditions.

Code	Description	H x W x D (mm)	Weight
ATLAS-803023	Standard enclosure colour light grey RAL 7035 supplied with Glavanised steel back plate & direct wall mounting fixings	800 x 300 x 230	9.66kg
ATLAS-803023-P	Clear glazed door enclosure colour light grey RAL 7035 supplied with Glavanised steel back plate & direct wall mounting fixings	800 x 300 x 230	9.66kg



Environmental Performance

Minimum temperature	-30° C	IP dust water protection degree IEC-60529	66
Maximum temperature	70° C	IK impact protection degree IEC-62208	10
Compression resistance	100kg		

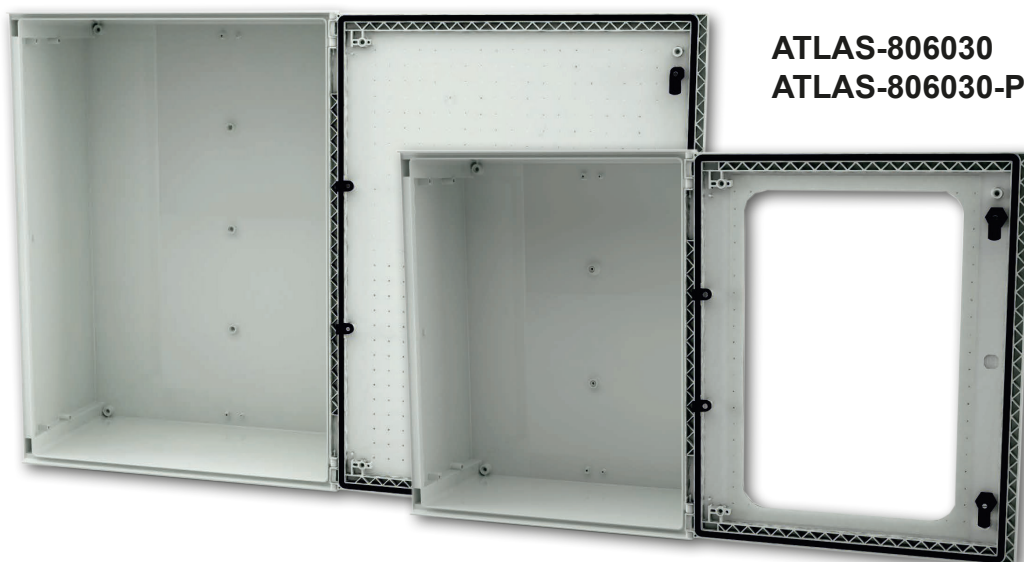
Electrical Performance

Nominal tension direct current up to:	1500 VdC
Nominal tension alternating current up to:	1000 Vac
Maximum power dissipation $\Delta T=40^{\circ}\text{C}$ (wall surface)	103.0 W

Installation and assembly system

Inside Installation	Yes	Wall Surface	Yes
Outdoor Installation	Yes	Floor Mounting	Yes
Flush Mounting	No	Pole Mounting	Yes

Accessories Available -
See page 17

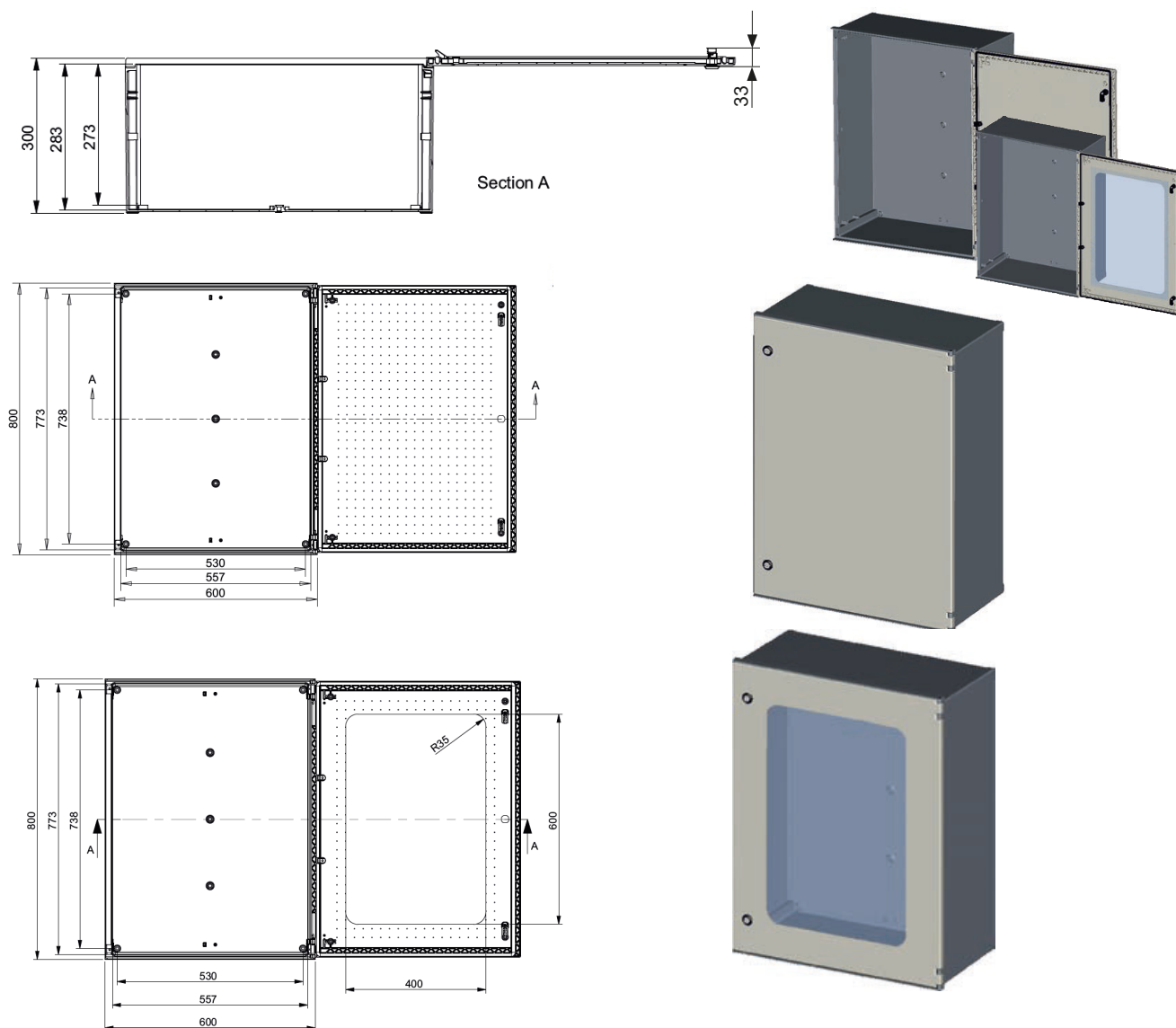


ATLAS-806030
ATLAS-806030-P

Features

- Manufactured from fibre glass reinforced polyester, moulded by hot compression.
- Colour Light Grey RAL 7035
- Self-extinguishable: 960°C test withstand. Halogen free. Double insulation. No electrical contact risks.
- Degree of protection IP66 UNE 20324 (EN 60529).
- Certification of compliance with IEC62208 enclosure standard. Suitable for indoor or outdoor use.
- Large door opening (180°). Reversibility for installation right or left door opening.
- Anti-intruder hinges system.
- 2 lock with double-bar insert as standard. Other lock options available - please ask for details.
- Galvanised steel mounting plate.
- Resistant to harsh atmospheres.
- Light weight gives an easy installation.
- 10+ years. Long life lasting without maintenance under standard environmental conditions.

Code	Description	H x W x D (mm)	Weight
ATLAS-806030	Standard enclosure colour light grey RAL 7035 supplied with Galvanised steel back plate & direct wall mounting fixings	800 x 600 x 300	19.05kg
ATLAS-806030-P	Clear glazed door enclosure colour light grey RAL 7035 supplied with Galvanised steel back plate & direct wall mounting fixings	800 x 600 x 300	19.05kg



Enviromental Performance

Minimum temperature	-30° C	IP dust water protection degree IEC-60529	66
Maximum temperature	70° C	IK impact protection degree IEC-62208	10
Compression resistance	100kg		

Electrical Performance

Nominal tension direct current up to:	1500 VdC
Nominal tension alternating current up to:	1000 Vac
Maximum power dissipation $\Delta T=40^{\circ}\text{C}$ (wall surface)	185.0 W

Installation and assembly system

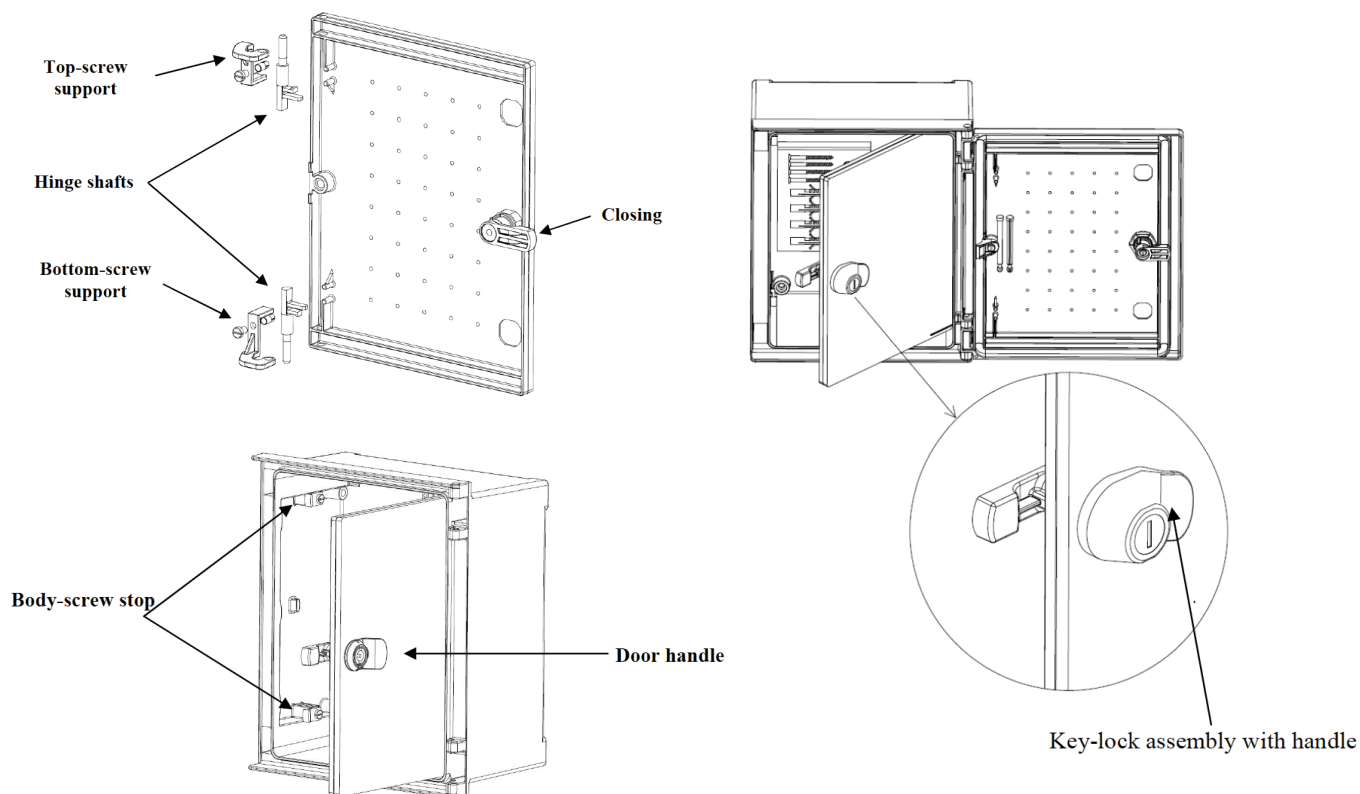
Inside Installation	Yes	Wall Surface	Yes
Outdoor Installation	Yes	Floor Mounting	Yes
Flush Mounting	No	Pole Mounting	Yes

Accessories Available -
See page 17

ATLAS Enclosure Accessories

Internal Door Fitting Instructions

Code	Product Description	Suitable for use on Atlas Enclosure -
ATLAS-PUI-325	Internal Door	ATLAS-302514
ATLAS-PUI-43		ATLAS-403020
ATLAS-PUI-44		ATLAS-404020
ATLAS-PUI-54		ATLAS-504020
ATLAS-PUI-64		ATLAS-604023
ATLAS-PUI-65		ATLAS-605023
ATLAS-PUI-83		ATLAS-803023
ATLAS-PUI-86		ATLAS-806030



Watch:
Installing an Internal Door in
a GRP Enclosure

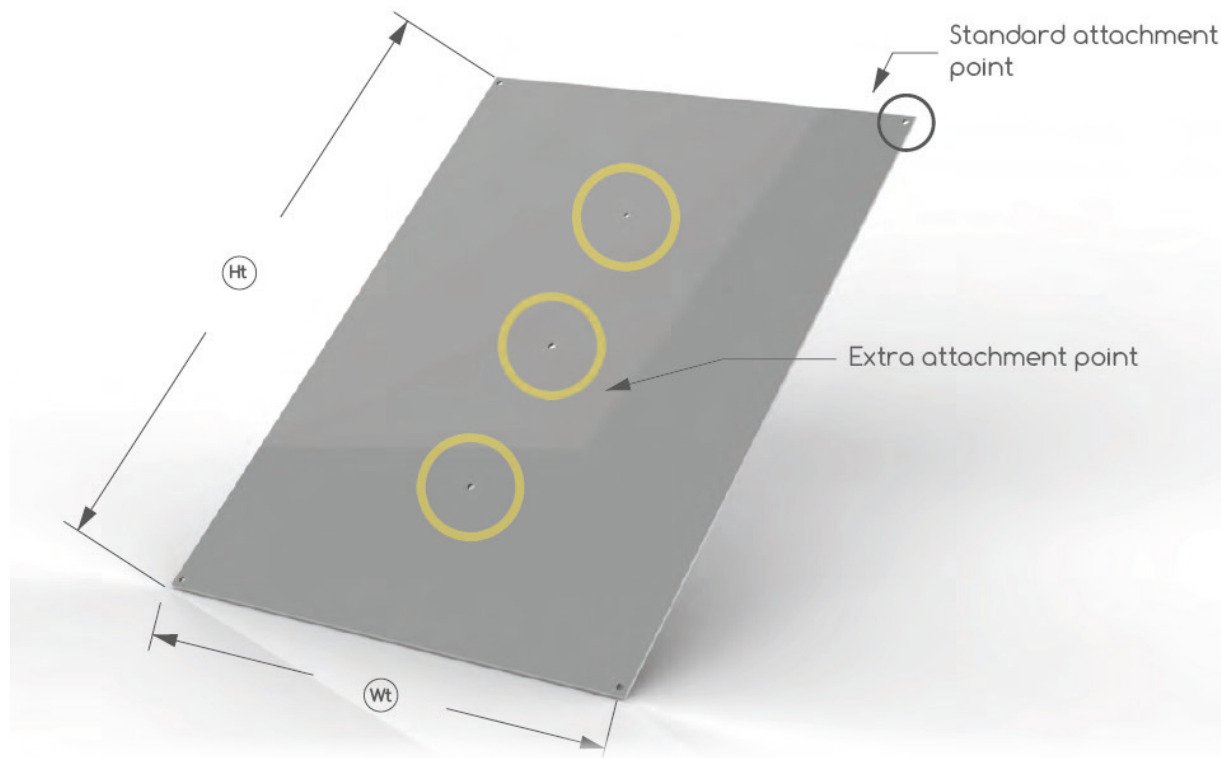


<https://youtu.be/CWBYgffMLqE>

Polyester Back Panel

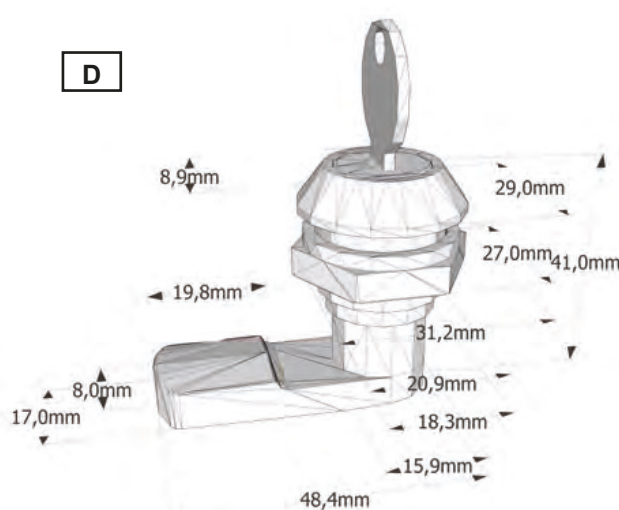
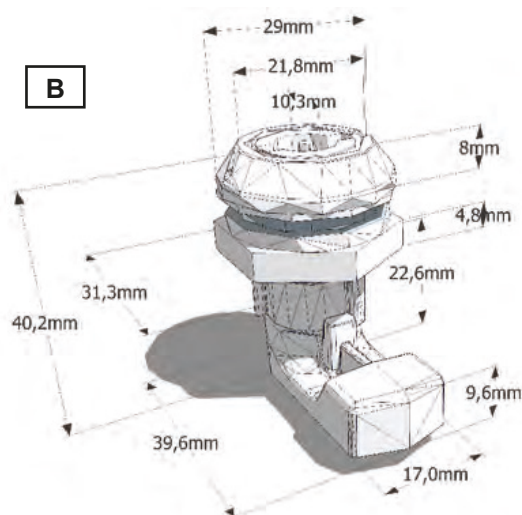
Code	Product Description	Height (mm)	Width (mm)	Depth (mm)	Weight (Kg)
ATLAS-PBP-325	Polyester back panel for the ATLAS-302514 & -P models	262	198	3	0,38
ATLAS-PBP-43	Polyester back panel for the ATLAS-403020 & -P models	360	248	3	0,59
ATLAS-PBP-44	Polyester back panel for the ATLAS-404020 & -P models	360	348	3	0,87
ATLAS-PBP-54	Polyester back panel for the ATLAS-504020 & -P models	460	348	3	1,09
ATLAS-PBP-64	Polyester back panel for the ATLAS-604023 & -P models	558	348	3	1,30
ATLAS-PBP-65	Polyester back panel for the ATLAS-605023 & -P models	558	448	3	1,75
ATLAS-PBP-83	Polyester back panel for the ATLAS-803023 & -P models	756	248	3	1,46
ATLAS-PBP-86	Polyester back panel for the ATLAS-806030 & -P models	756	548	4	2,78

- Larger back panels are supplied with with central fixing options of up to 3 holes for extra anchoring and improves the stiffness of the plate to prevent the base from sagging when attaching heavier components. The relevant additional screws for the central fixing only would be supplied.



22mm Lock Options and Enclosure Hinge Pins

Code	Product Description	See Diagram -	Weight (Kg)
ATLAS-CBD-10	Double bar lock (standard)	B	0.04
ATLAS-CML-12	Lock with manual handle and key	D	0.07
ATLAS-CML-12-DEA	Keylock with butterfly handle	F	



CDB-10 Double bar 10mm



CML-12-DEA Lock with Butterfly Handle



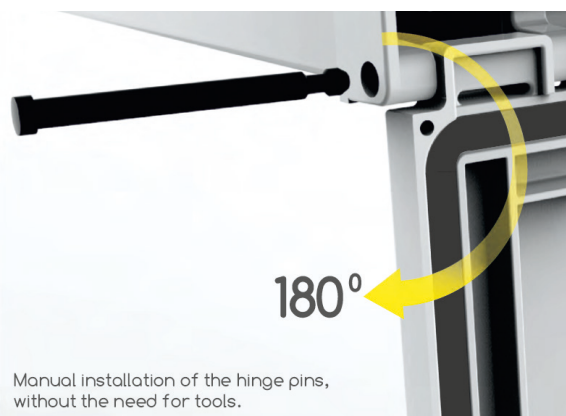
CML-12 Lock with manual handle & key

Hinge Pins

NON-METALLIC hinge pins that will prevent any kind of corrosion and rust.

Quick, TOOL-LESS installation which allows multiple install/removal as many times as necessary and facilitates working on the door and the enclosure body separately.

Additionally, the hinges will remain hidden, enable 180° door opening and this flexibility will help prevent the doors from breaking.



Manual installation of the hinge pins, without the need for tools.

Door Stays

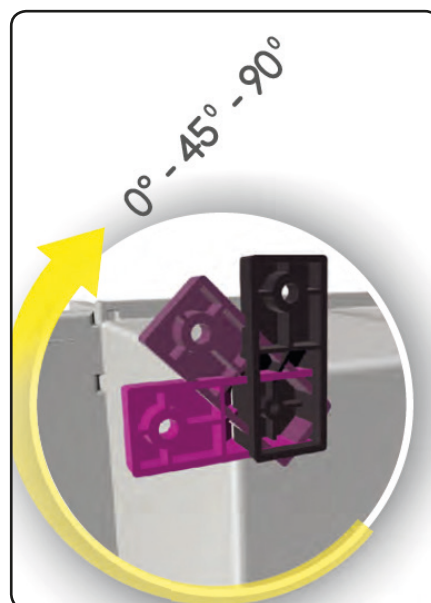
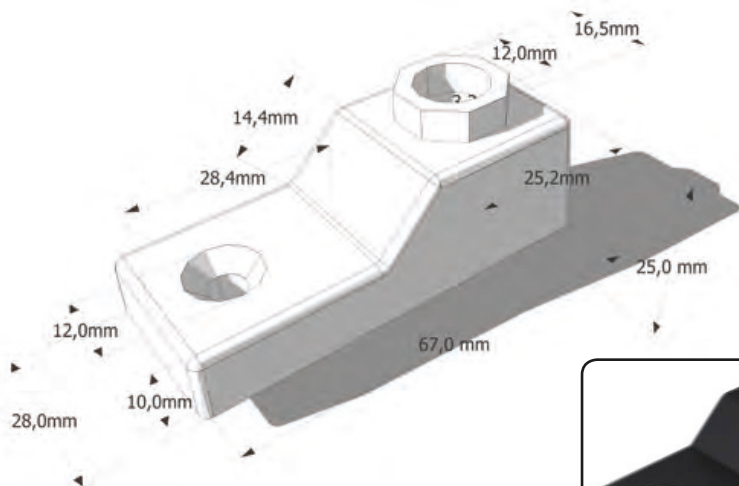
Code	Product Description	Weight (Kg)
ATLAS-BO-B-RETENE	Holders for the most of the range of ATLAS Enclosures (2 per) Complete self-assembly set includes: 2 Holders, 4 m6x10 screws y 4 M6 inserts *Does not include ATLAS-302514	0.01

2 HOLDERS to prevent the doors and the hinges from breaking. They will absorb any air bursts, impacts during manipulation and installation of the systems.



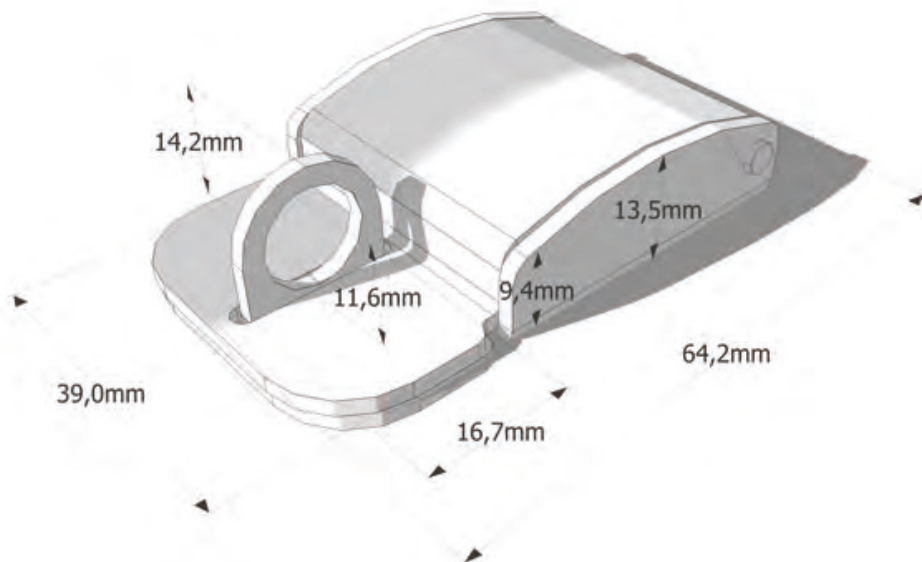
Wall Mounting Feet

Code	Product Description	Weight (Kg)
ATLAS-OFM-14	Wall Fixing feet, 4 per enclosure	0.09



Stainless Steel Padlock Hasp

Code	Product Description	Weight (Kg)
ATLAS-CBC-13-IN	Lock for securing a padlock device, STAINLESS steel	0.12



Stainless Steel Padlock Hasp

Code	Product Description	Weight (Kg)
ATLAS-DV-M	Ventilation system (IP54)	0.01
ATLAS-DV-G	Large ventilation system (IP54)	0.03

Allows the entry and natural circulation of air, we recommend 2 units per enclosure in a diagonal position.

! It's necessary to modify the enclosure in order to perform the installation (In some models, it will reduce the protection of the enclosure to IP54)

ATLAS-DV-M

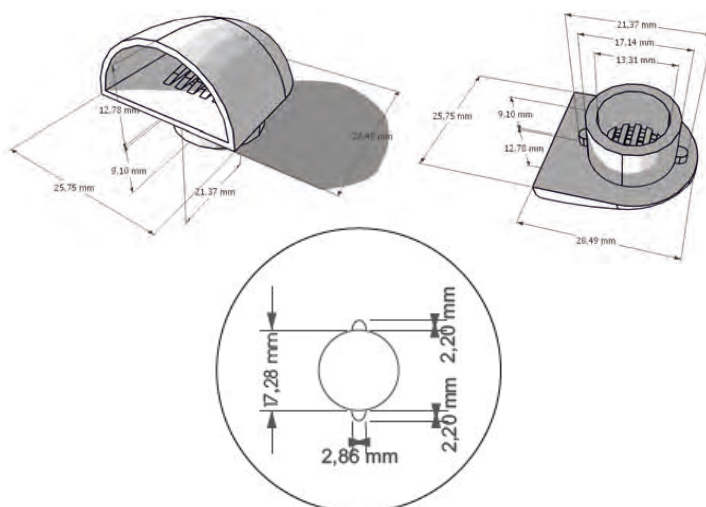
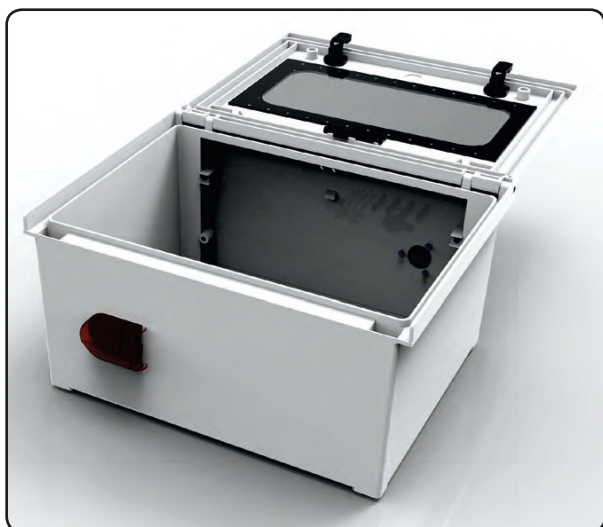


Diagram of the
ATLAS-DV-M machining

The LARGE device has a rubber membrane for the IP54 protection, we recommend the use of 2 units

ATLAS-DV-G

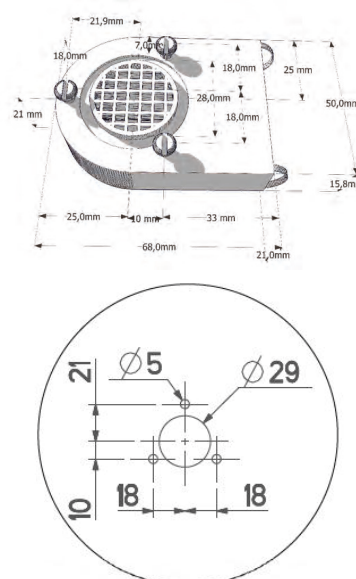
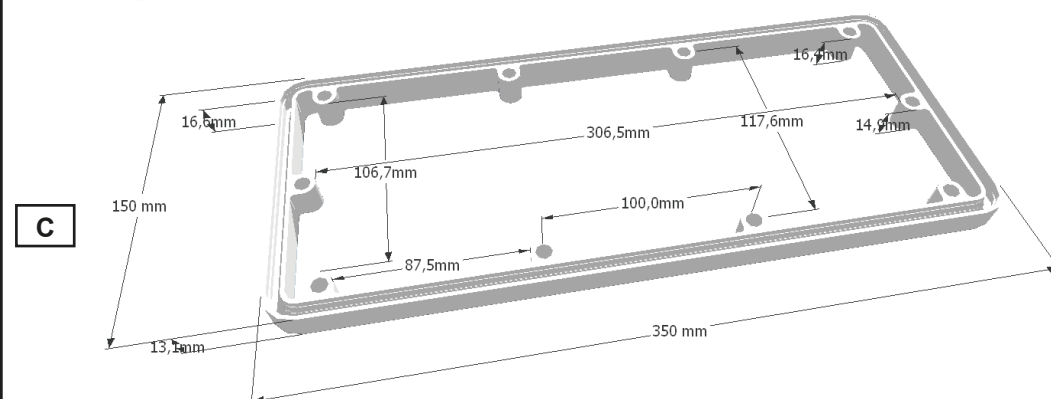
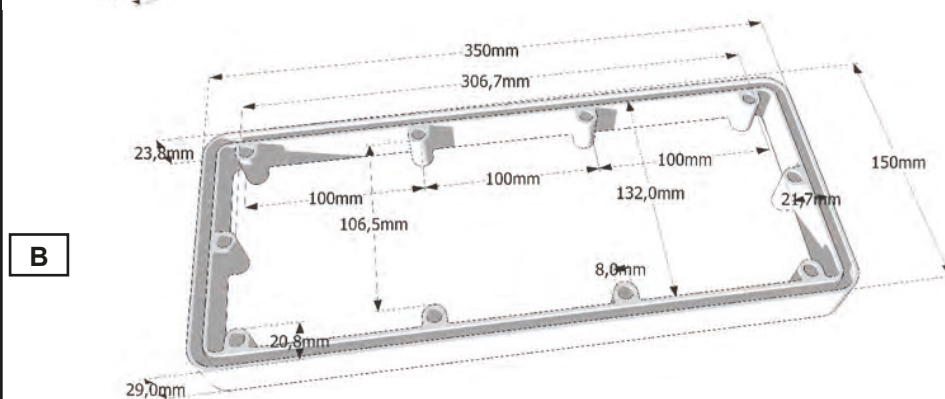
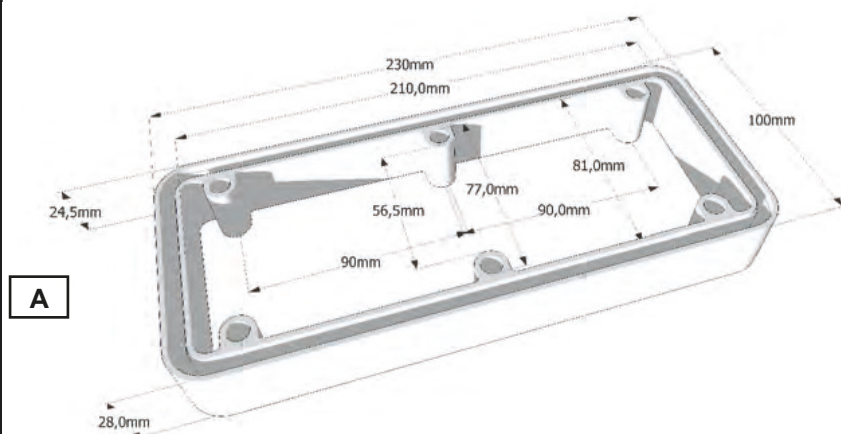
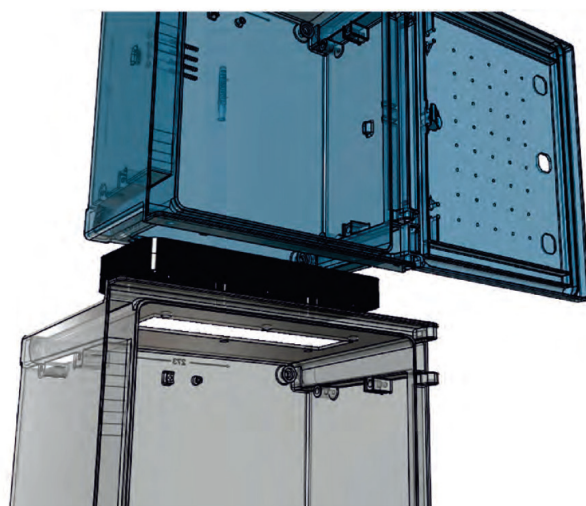
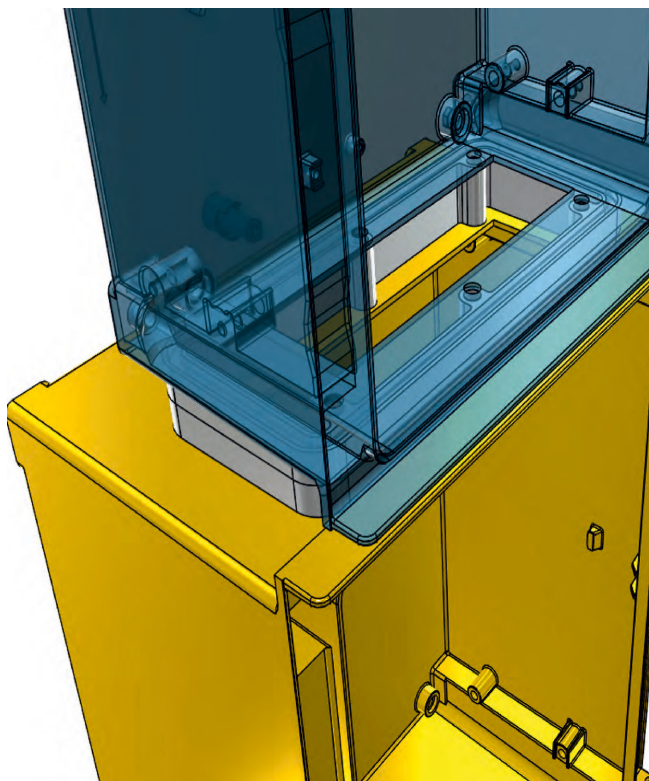


Diagram of the
ATLAS-DV-G machining

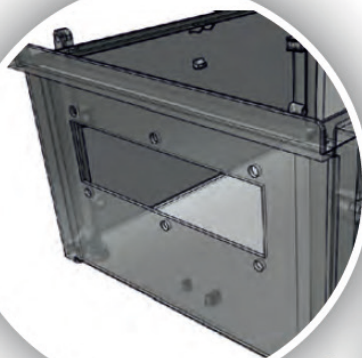
Enclosure Connection Flanges

Code	Product Description	See Diagram -	Weight (Kg)
ATLAS-UA-230X100	Connection flange through the top / bottom of the Atlas-302514 & Atlas-403020 enclosures	A	0.15
ATLAS-UA-350X150	Connection flange through the top / bottom of the Atlas- 404020, Atlas-504020, Atlas-604023, Atlas-605023, Atlas-803023 & Atlas-806030	B	0.19
ATLAS-UA-350X150-B	Connection flange for the laterals of Atlas-803023 & Atlas-806030	C	0.24





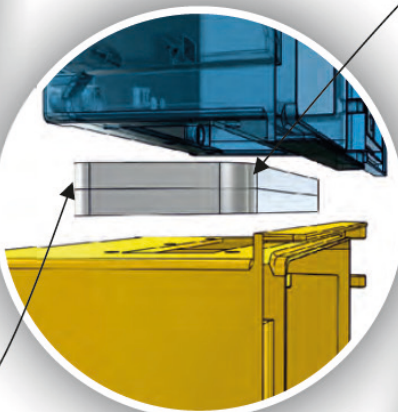
1



Both enclosures must be drilled to join them together

Narrow Side

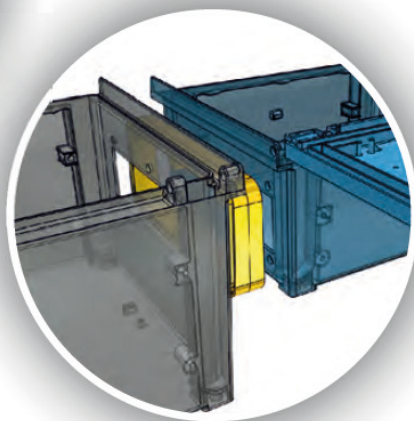
2



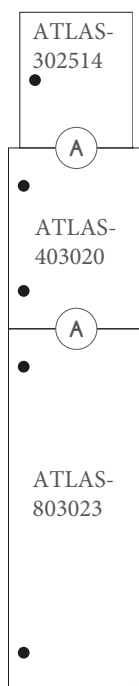
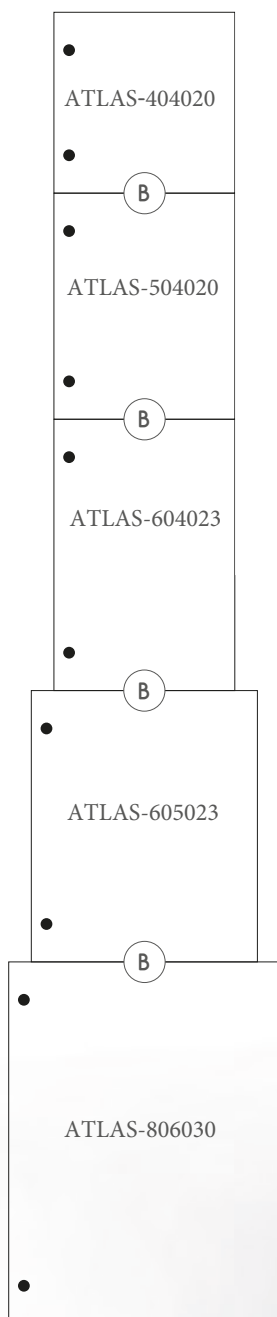
Thick Side

Place the connection on top of the enclosures so it may be used as a template.

3



Connect using the provided m8 x 30 screws.



ATLAS-302514 + ATLAS-403020

