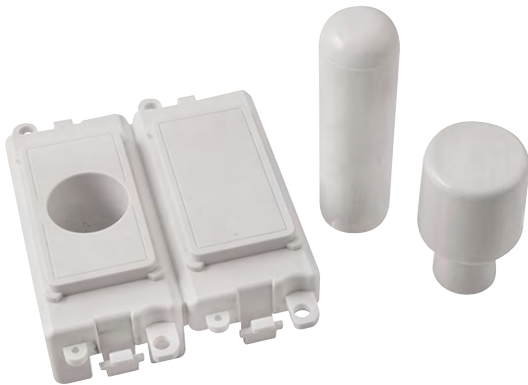


Product Code: GM150PW
 Description: 2 Module Dimmer Mounting Kit
 Luckinslive 404474342



General Information

Dimensions (mm)	49 (W) x 50 (H)	
Colour	Polar White	
Insert Colour	Polar White	
Materials	Body & Insert: Nylon	Control Button: Nylon
Anti Microbial Certified	No	
Minimum Back Box Depth (mm)	47	
Ingress Protection	IP20	
Operational Temperature (°C)	-5 to +40	
Warranty (Years)	20	

Standards BS 5733

Additional Information

For cleaning / polishing of products, use only a soft, dry, clean cloth.
 Ensure that the mains supply is isolated before commencing installation and refer to the circuit diagram with the relevant product.
 Bare earth cables must always be covered with appropriate sleeving and wired to the earth terminal.

Compatible Dimmer Modules MD9014: 100W Dual Mode LED Dimmer Module
 GM9001: 6A Push ON/OFF (Dummy Dimmer / Non Dimmable) Module
 GM9010: 1-10V Analogue Rotary Dimmer Module

UK Patent: GB 2578427

Scolmore House, Mariner, Lichfield Road Industrial Estate,
 Tamworth, Staffordshire, B79 7UL United Kingdom
T: +44 (0)1827 63454 | **F:** +44 (0)1827 63362
E: sales@scolmore.com | **W:** scolmore.com



Catalogue



Range



DoC



Installation

