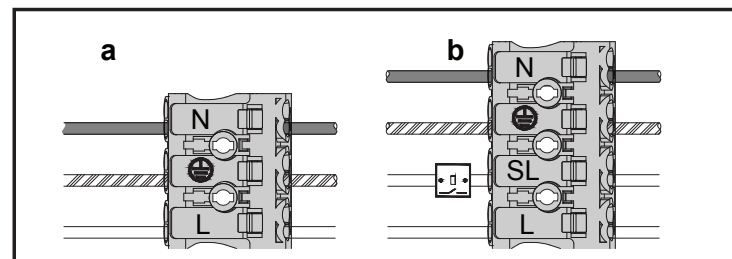
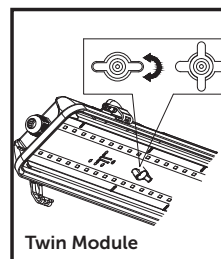
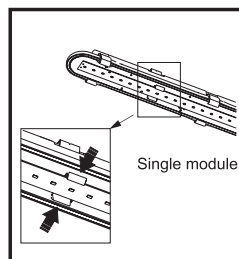


Read these instructions before installation and retain for future reference. This equipment should be installed by a competent electrician 

Power	L (mm)	W (mm)	H (mm)
10W Single	72	75	665
20W Double	72	115	665
20W Single	72	75	1275
40W Double	72	115	1275
25W Single	74.5	74.5	1587
52W Double	76.5	116.5	1582
28W Single	74.5	74.5	1887
60W Double	76.5	116.5	1882



## Important Information

We recommend that luminaires are installed by a qualified electrician ensuring the installation complies with current IEE wiring regulations BS7671:2018 & local building control.

- All tests should be carried out in accordance to EN 50172:2004.
- BELL will not accept responsibility for any claims arising from a poor installation.
- The light source of this luminaire is not replaceable: when the light source reaches end of life, the whole luminaire must be replaced.
- Not suitable for petrochemical installations.
- Upgrading of MCB may be necessary
- 1 year warranty on battery LiFePO4

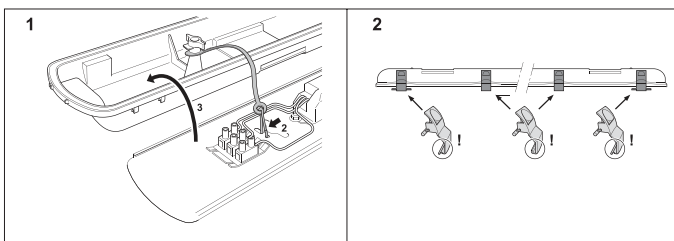
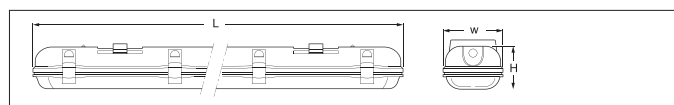
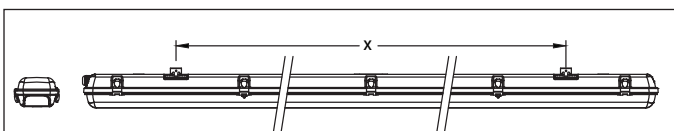
**Warning:** Before installation ensure power is disconnected

**Maximum mounting height 3.2m**

**You are advised to test 5 samples before mass application of sensor in a new lighting project.**

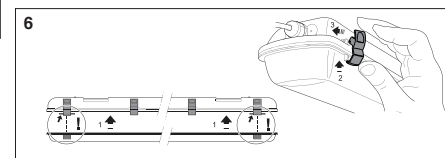
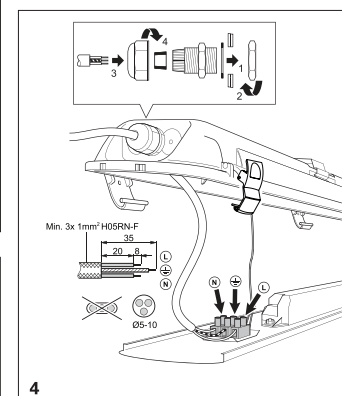
**The distance between any inductive sensors should be greater than 3m.**

This product may contain substances that can be hazardous to the environment if not disposed of properly. Electrical and electronic equipment should never be disposed of with general household waste but must be separated for its correct treatment and recovery. Where possible recycle your packaging.

	600mm Single	600mm Double	1200mm Single	1200mm Double	1500mm Single	1500mm Double	1800mm Single	1800mm Double
Xmm	400	400	860	860	1027	1027	1004	1004

IP65 CE   



## Testing & Commissioning for Emergency Luminaire

- Ensure the Load is connected.
- Connect the battery.
- Switch on the Unswitched Supply
  - Check the Charge LED illuminates.
- Switch on the Maintained Supply
  - Check the LED illuminates as normal.
- Switch off the Maintained Supply.
- Switch off the Unswitched Supply
  - Check the Charge LED extinguishes and the load LED illuminates at a reduced output.
- Enter the commissioning date on the Battery Pack.  
Switch on the Unswitched Supply

Luminaire Ref/Location			In Case of difficulty, contact the Installation Engineers:- Tel: _____							
Full Recharge Time 24 Hours			Duration 3 Hours				Lamp Type - LED			
ROUTINE TEST RECORD										
	Year 1		Year 2		Year 3		Year 4		Year 5	
Monthly Test	Signed	Date	Signed	Date	Signed	Date	Signed	Date	Signed	Date
Functional										
Functional										
Functional										
Functional										
Functional										
Functional										
Functional										
Functional										
Functional										
Functional										
Functional										
Functional										
Three Hour										

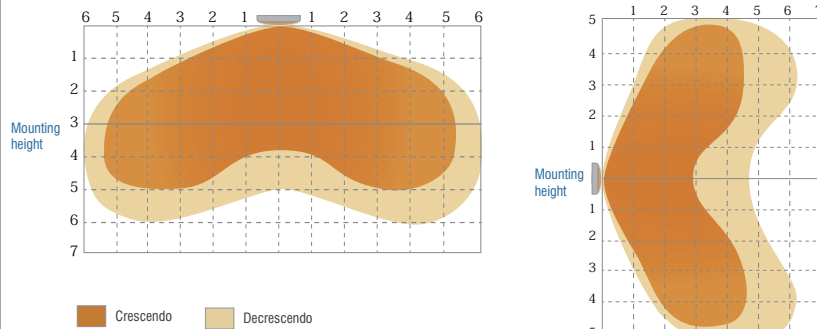
# Installation Instructions: Dura Supreme Battens

Codes: 11210/ 11211/ 11212/ 11213/ 11214/ 11215/ 11216/ 11217/ 11221/ 11219/ 11218/ 11222/ 11220/11223/ 11227/ 11225/ 11224/ 11228/ 11226/ 11229/ 11230/ 11231/ 11232

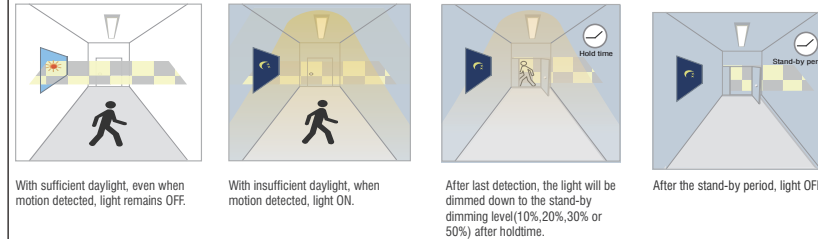
Date	Revision
24.5.2022	2

## Sensor Dim Version

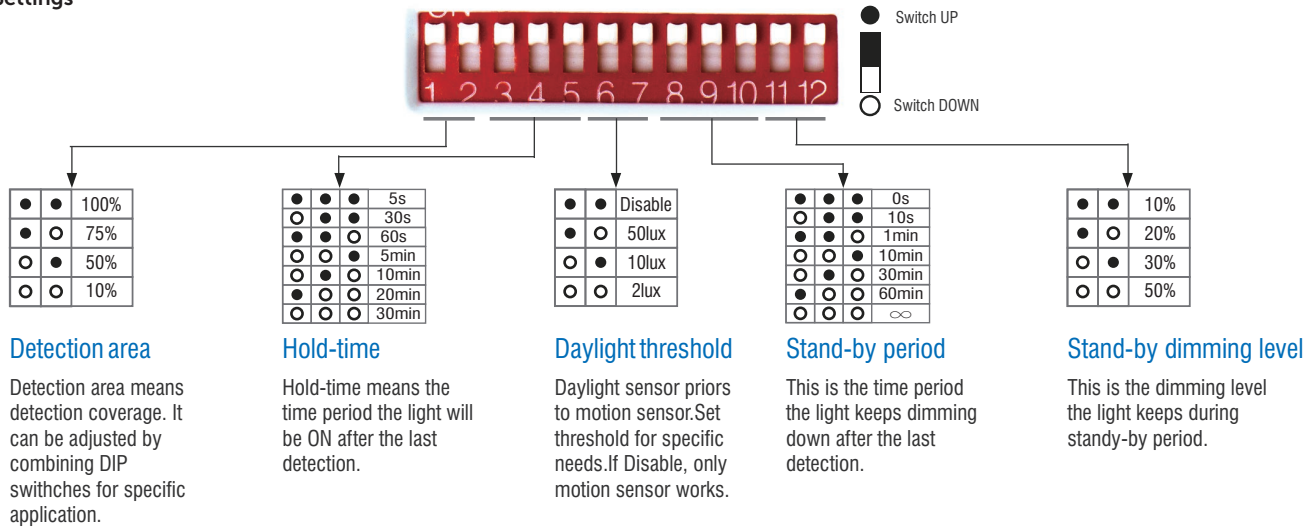
### Detection Coverage



### Application



### Settings



The figure shows a red DIP switch block with 12 switches. A legend indicates 'Switch UP' (black dot) and 'Switch DOWN' (white circle). Below the switches are five settings tables:

- Detection area:**

●	●	100%
●	○	75%
○	●	50%
○	○	10%

Detection area means detection coverage. It can be adjusted by combining DIP switches for specific application.
- Hold-time:**

●	●	5s
○	●	30s
●	○	60s
○	○	5min
○	●	10min
●	○	20min
○	○	30min

Hold-time means the time period the light will be ON after the last detection.
- Daylight threshold:**

●	●	Disable
●	○	50lux
○	●	10lux
○	○	2lux

Daylight sensor priors to motion sensor. Set threshold for specific needs. If Disable, only motion sensor works.
- Stand-by period:**

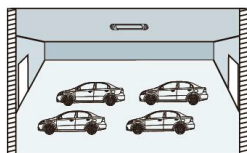
●	●	0s
○	●	10s
●	○	1min
○	○	10min
○	●	30min
●	○	60min
○	○	∞

This is the time period the light keeps dimming down after the last detection.
- Stand-by dimming level:**

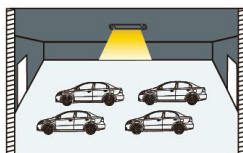
●	●	10%
●	○	20%
○	●	30%
○	○	50%

This is the dimming level the light keeps during standy-by period.

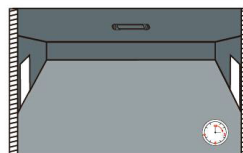
## On/Off Function



1 With sufficient ambient light, the light will not be switched on even if with motion signal.



2 With insufficient ambient light, the sensor switches on the light when motion is detected.

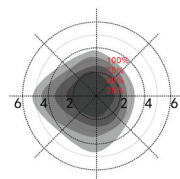


3 After elapse of hold time, the sensor switches off the light when no motion is detected.

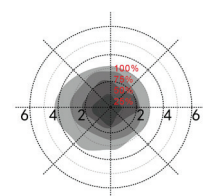
## Radiation Pattern

### 1) Ceiling mounting

Ceiling mounted height: 3m  
Sensitivity: 100%/75%/50%/25%



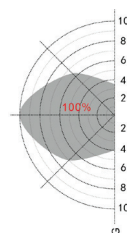
Normal moving (Speed: 1m/s)



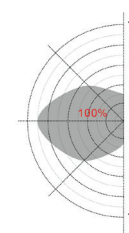
Slow moving (Speed 0.3m/s)

\*Only 100%/75% detection sensitivity is workable when installed at 6m mounting height. 25%/50% sensitivity is not able to detect motion signal.

Horizon mounted height: 2m  
Sensitivity: 100%



Normal moving (Speed: 1m/s)



Slow moving (Speed 0.3m/s)

## DIP Switch Setting

Detection Area (Sensitivity)

	1	2
100%	ON	ON
75%	-	ON
50%	ON	-
25%	-	-

Hold Time

	3	4	5	
I	ON	ON	ON	5S
II	-	ON	ON	30S
III	ON	-	ON	90S
IV	-	-	ON	5min
V	ON	ON	-	20min
VI	-	-	-	30min

Daylight Threshold

	6	7	8	
I	ON	ON	ON	2Lux
II	ON	ON	-	10Lux
III	-	ON	-	30Lux
IV	ON	-	-	50Lux
V	-	-	-	Disable*

\*"Disable" means the daylight sensor not work. it will turn on light once motion is detected regardless of ambient light .

## 9. Override Function

Quick switch ON/OFF 3 times within 2sec to override sensor function. Lights will switch on all the time. Power off and on again to recover sensor function.