

Installation Instructions: Downlight (10950-55)

Read these instructions before installation and retain for future reference.

This equipment should be installed by a competent electrician



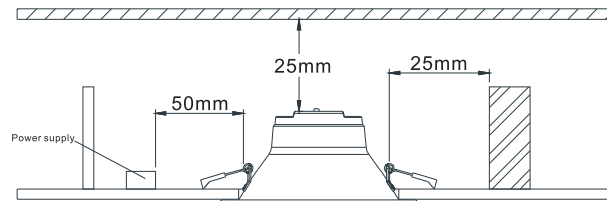
Date	Revision
1.6.2022	2

Important Information

We recommend that luminaires are installed by a qualified electrician ensuring the installation complies with current IEE wiring regulations BS7671:2018 & local building control.

- BELL will not accept responsibility for any claims arising from a poor installation.
- The light source of this luminaire is not replaceable: when the light source reaches end of life, the whole luminaire must be replaced.
- Always switch off mains supply before installing.
- Operating Temperature 0°C to +35°C
- All tests should be carried out in accordance to EN 50172:2004
- Do not cover with any insulation

This product may contain substances that can be hazardous to the environment if not disposed of properly. Electrical and electronic equipment should never be disposed of with general household waste but must be separated for its correct treatment and recovery. Where possible recycle your packaging.



Tab 1: Ceiling cutout reference table.

Downlight Ø (mm)	115	190	240
Ceiling Cut-Out Ø (mm)	90	160	200

NOTE: Before installation, please check the IP label on the luminaire to choose the right place to install.

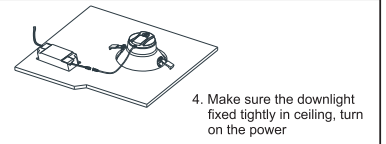
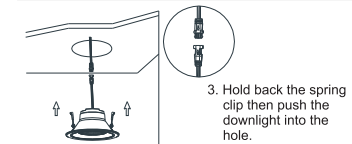
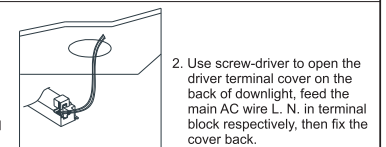
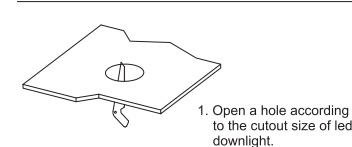
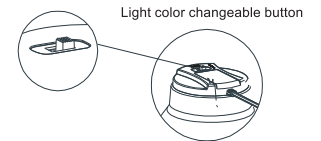
IP20/IP40	Indoor use only, do not use in wet or damp place.
IP44/IP54	Suitable for indoor areas including bathrooms and covered/sheltered areas such as porches.
IP65	Suitable for outdoor areas, not suitable for water immersion.

NOTE: Before installation, please check the information of driver as below.

Non-dim	Can not be used with any dimmer.
Triac dim	Compliable with recommended TRIAC dimmers, dimming range 8-100%.

1-10V = 10-100% Dimming
Dali / Switch Dim = 1-100% Dimming

For the products with light color changeable button, please select the light color (CW/NW/WW) before installation.



Input wire Ø > 0.75mm