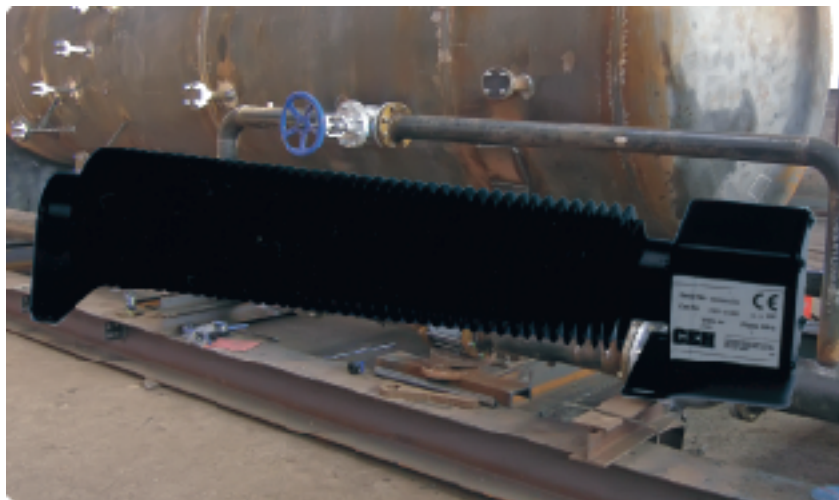


CFT Heavy Duty Tubular Heater

CI/SfB

56

TS 139



Applications

A range of very robust tubular heaters for heating applications where a waterproof heavy duty convector heater is required. Can be used in applications where washing down may occur. Typical locations include Dairies, Food storage, Mines and Quarries, Shipboard, Container storage, Kennels, Catteries, Zoos, Greenhouses and Plant/Lift rooms.

Features

- very robust construction
- heavy duty finned steel tube
- reliable mineral insulated metal sheathed element
- matt black high temperature powder coated finish
- suitable for floor or wall mounting (must be horizontal)
- large terminal box for easy connections
- terminal box welded to tube and sealed to IP65
- slotted fixings for easier positioning
- 230V and 110V units as standard other voltages also available.
- special 24V 250W unit for mobile and small boat applications.

Options

- remote exterior frost thermostat to IP65 (CXFST)
- remote interior frost thermostat (CFST)
- remote interior room thermostat (CRST-16)
- remote interior room thermostat - tamperproof (CTRT-10)
- wire guard for added safety (CWG-)

Installation (Download full installation instructions at www.cehltd.co.uk)

CFT heaters must be mounted horizontally and must not be covered.

Although surface temperatures may be considered acceptable for most applications, the optional wire guard is recommended in areas where contact with the hot surface is to be avoided, for example animal enclosures or tight spaces such as crane cabs etc.

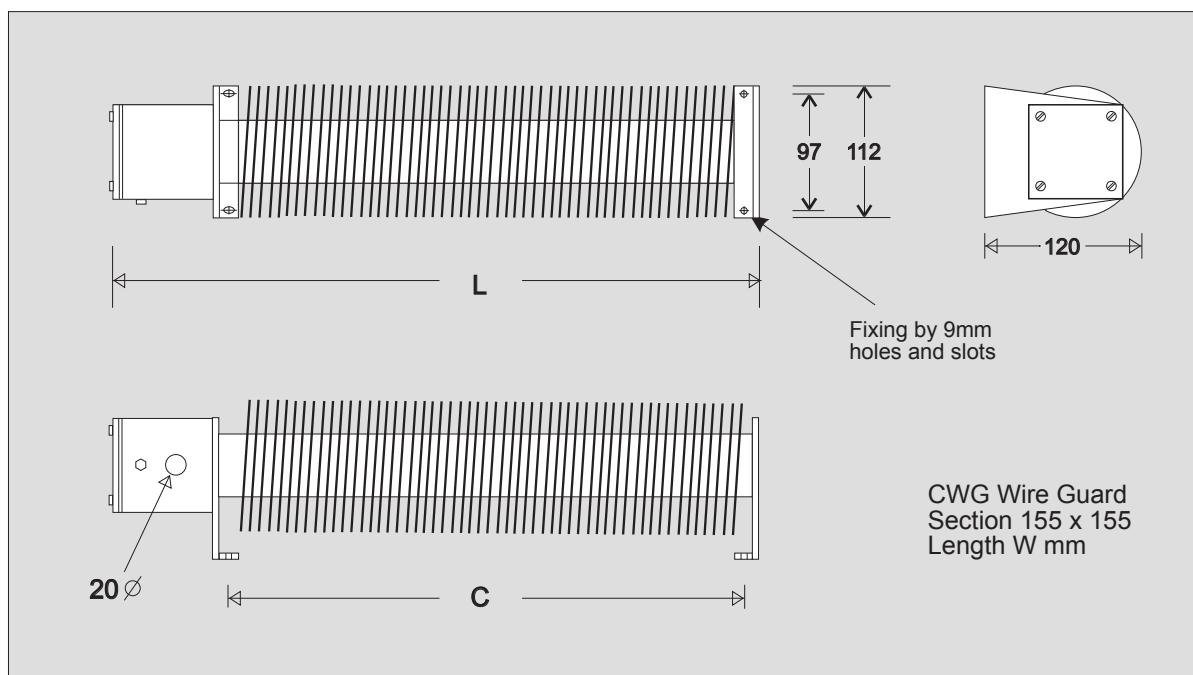
Electrical connection is made via a 20mm hole to easily accessible screw terminals inside the connection box. Electrical installation should be by a suitably qualified person in accordance with the latest edition of the IEE Requirements for Electrical Installation (BS 7671:2008).

If installed in wet conditions suitable glands must be used to ensure IP65 integrity is maintained.

Air temperature control, if required, is by remote thermostat.



Specification



Cat No	Watts	Volt	Length L mm	Fix Cent C mm	Wt. (kgs)	Wire Guard	Guard W mm
CFT-0252	250	24	360	253	4.2	CWG - 0300	400
CFT-0300	300	230	360	253	4.2	CWG - 0300	400
CFT-0500	500	230	585	478	7.0	CWG - 0500	600
CFT-0750	750	230	810	703	9.8	CWG - 0750	850
CFT-1000	1000	230	1035	928	12.6	CWG - 1000	1100
CFT-1500	1500	230	1485	1378	18.3	CWG - 1500	1550
CFT-2000	2000	230	1935	1828	23.9	CWG - 2000	2000
CFT-0301	300	110	360	253	4.2	CWG - 0300	400
CFT-0501	500	110	585	478	7.0	CWG - 0500	600
CFT-0751	750	110	810	703	9.8	CWG - 0750	850
CFT-1001	1000	110	1035	928	12.6	CWG - 1000	1100
CFT-1501	1500	110	1485	1378	18.3	CWG - 1500	1550
CFT-2001	2000	110	1485	1378	18.3	CWG - 1500	1550

Thermostats

Cat No	Thermostat type	Range	Amp 230Vac	Height mm	Width mm	Depth mm
CXFST	Weatherproof Frost (IP65)	-5°C / +25°C	10	120	160	77
CFST	Interior Frost	-5°C / +15°C	16	79	75	45
CRST-16	Interior Room	+10°C / +30°C	16	84	84	40
CTRT-10	Interior Room Tamperproof	+6°C / +30°C	10	78	78	35

The manufacturers reserve the right to change the specification without prior notice E&OE



Commercial Electric Heat Limited
Burnfoot Industrial Estate
HAWICK Roxburghshire TD9 8SL
Tel 01450 372103 Fax 01450 377800
www.cehltd.co.uk
email sales@cehltd.co.uk