

REPLACEMENT TRIDONIC DRIVER FOR 30W NON-DIMMABLE KINGSTON/HINXTON
NET-45-43-02



NET LED Lighting

Buckingway Business Park, 300 Anderson Road,
Swavesey, Cambridge, CB24 4UQ

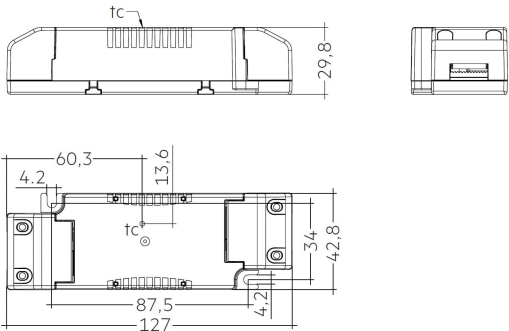
T: 01223 851505 | sales@netled.co.uk | www.netled.co.uk



ORDER BY 6PM
FOR NEXT DAY DELIVERY

Technical Specifications

Input Voltage (AC)	220-240V
Manufacturer	Tridonic
Housing Material	Polycarbonate



Other Options

Description	
NET-45-43-01	Replacement Tridonic Driver for 20W Non-Dimmable Kingston Panel
NET-45-43-02	Replacement Tridonic Driver for 30W Non-Dimmable Kingston/Hinxton Panels
NET-45-43-03	Replacement Tridonic Driver for 50W Non-Dimmable Kingston/Hinxton Panels

NET LED Lighting
Buckingham Business Park, 300 Anderson Road,
Swavesey, Cambridge, CB24 4UQ

T: 01223 851505 | sales@netled.co.uk | www.netled.co.uk



ORDER BY 6PM
FOR NEXT DAY DELIVERY